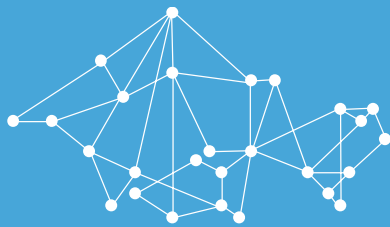




FAIRMODE

Forum for air quality modelling in Europe

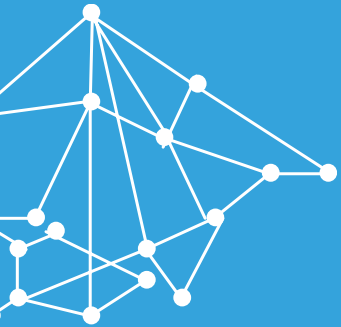


EU COMPOSITE MAPPING

STIJN JANSSEN

CONTENT

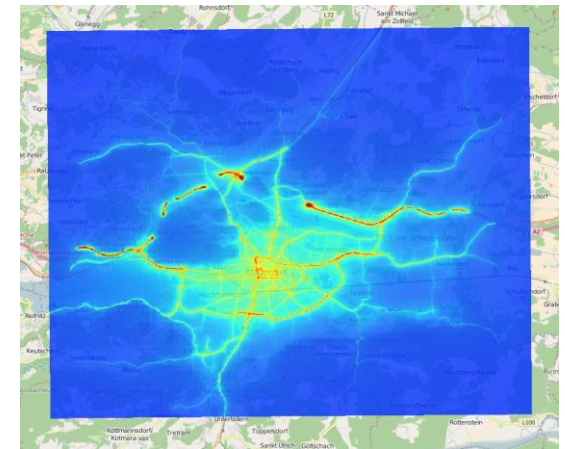
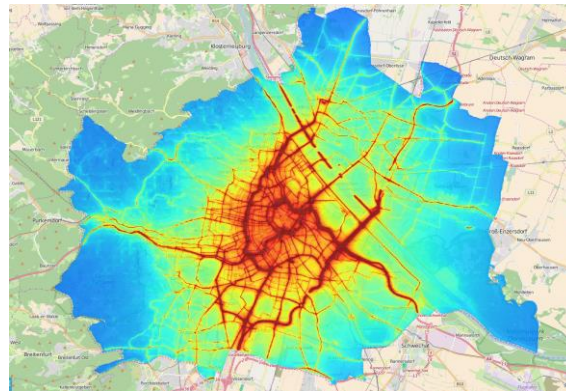
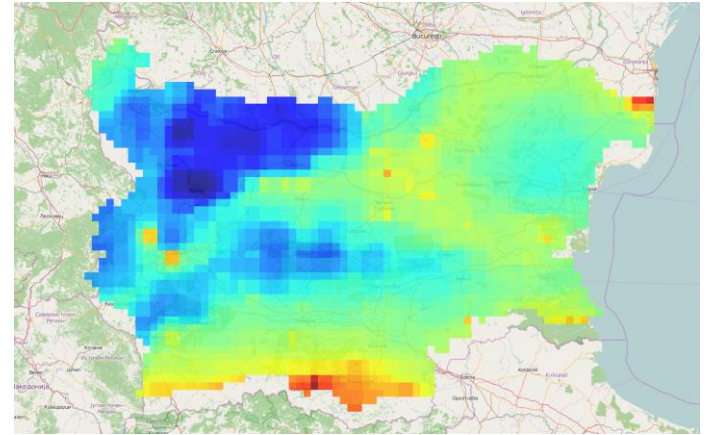
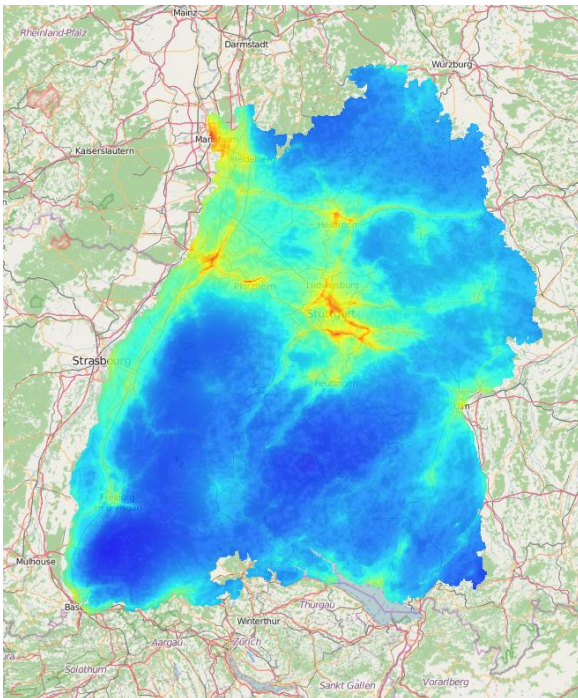
- » New developments and features
- » Workshop in regional clusters
- » Feedback and recommendations (*Wednesday 9h session*)



New developments

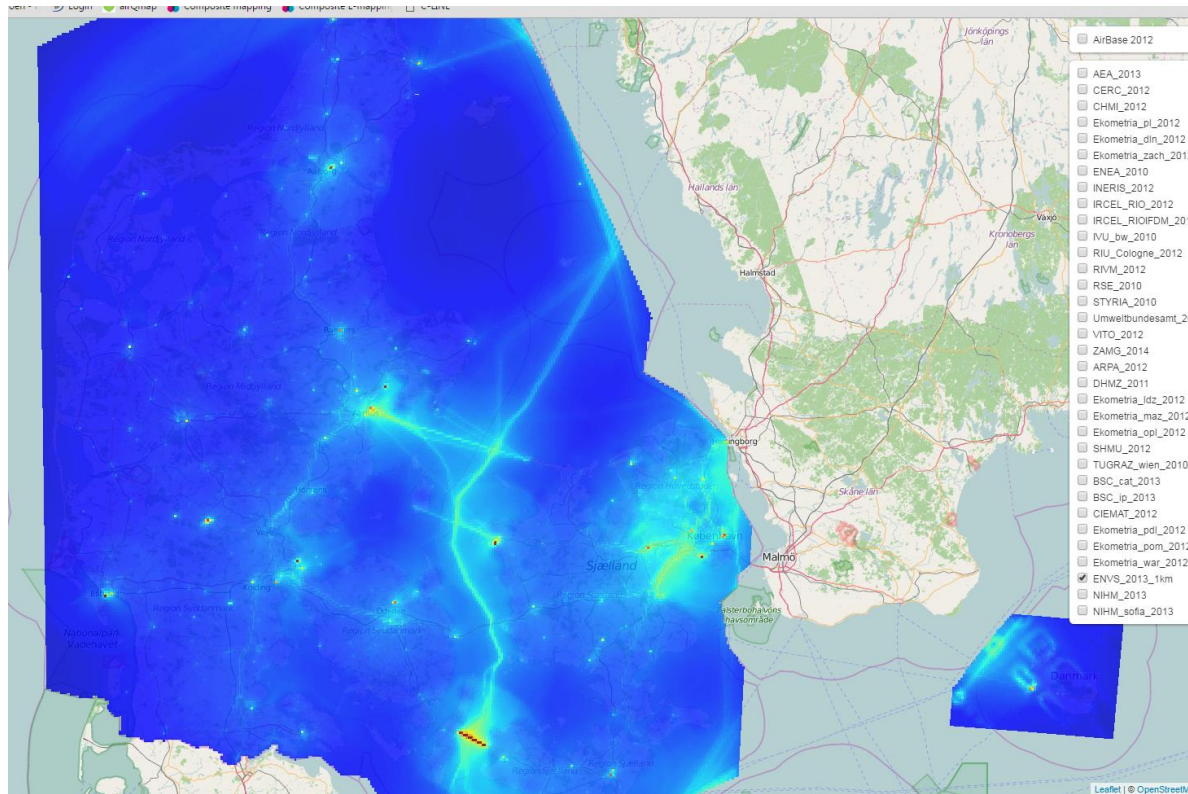
NEW CONTRIBUTIONS

- » Bulgaria & Sophia
- » Region of Baden-Württemberg
- » Austrian cities (Vienna, Klagenfurt, Leibnitz, Salzburg)

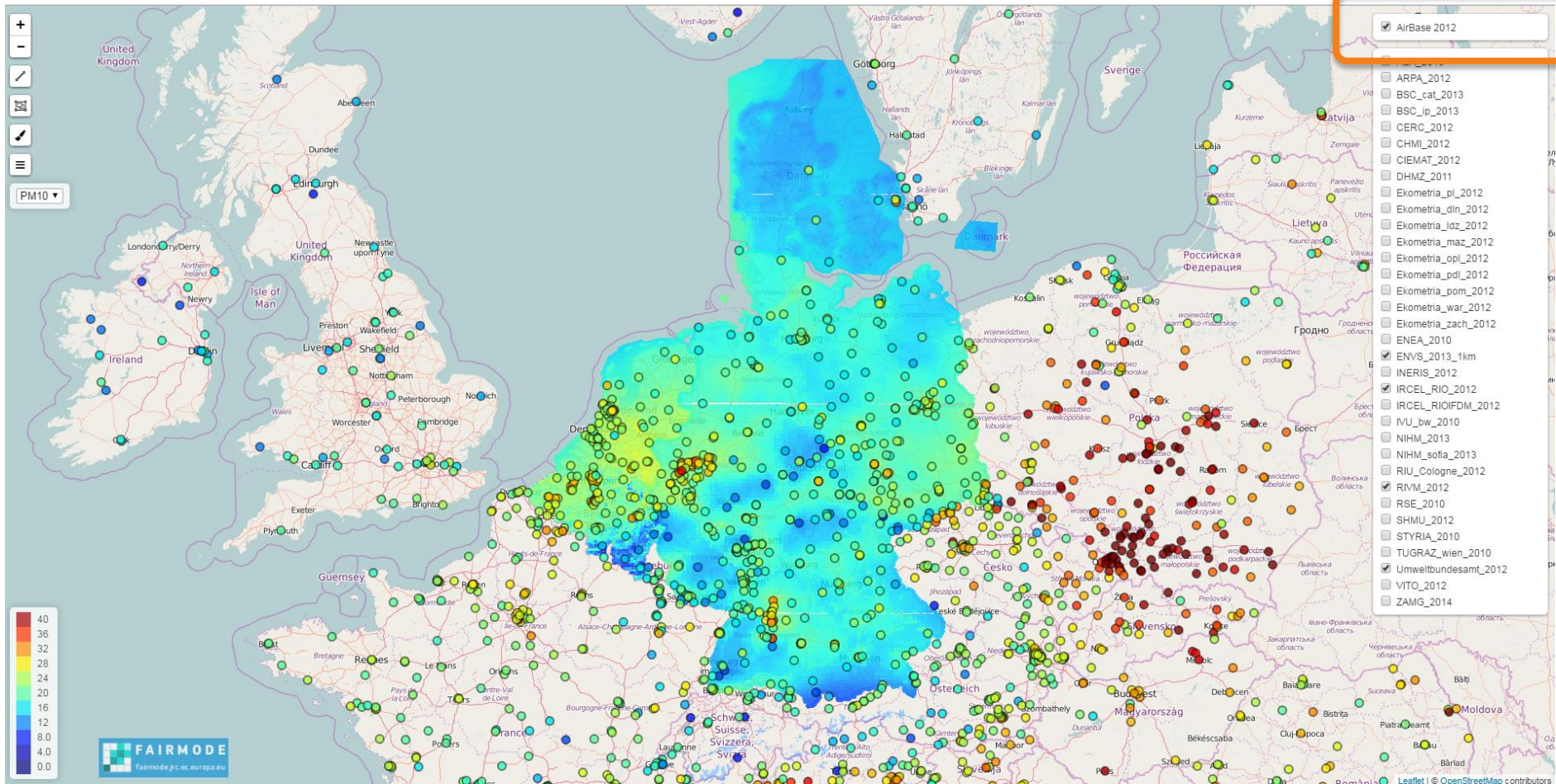


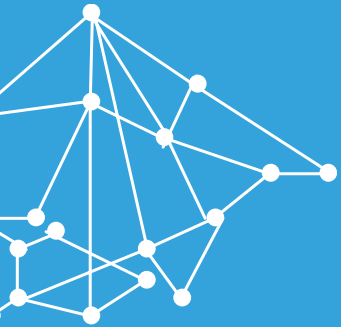
UPDATES

» Denmark, Belgium



AIRBASE MEASUREMENTS (2012)





Workshop in regional clusters

Working groups → 1 rapporteur per regional cluster

- » Questions to be answered:
 - » Are there any **inconsistencies** in the Composite Map for your region?
 - » If so, can you **identify the causes** (model performance, emissions, data assimilation,...)?
 - » Recommendations about **appropriate spatial scales**?
 - » Recommendations to support **e-Reporting** ?
 - » Recommendations to **improve the exercise**?
 - » Data formats, upload procedure, quality control, meta data...