

# Emission Ratios Helpful Indicators for QA/QC of Urban Emission Inventories

FAIRMODE Technical Meeting

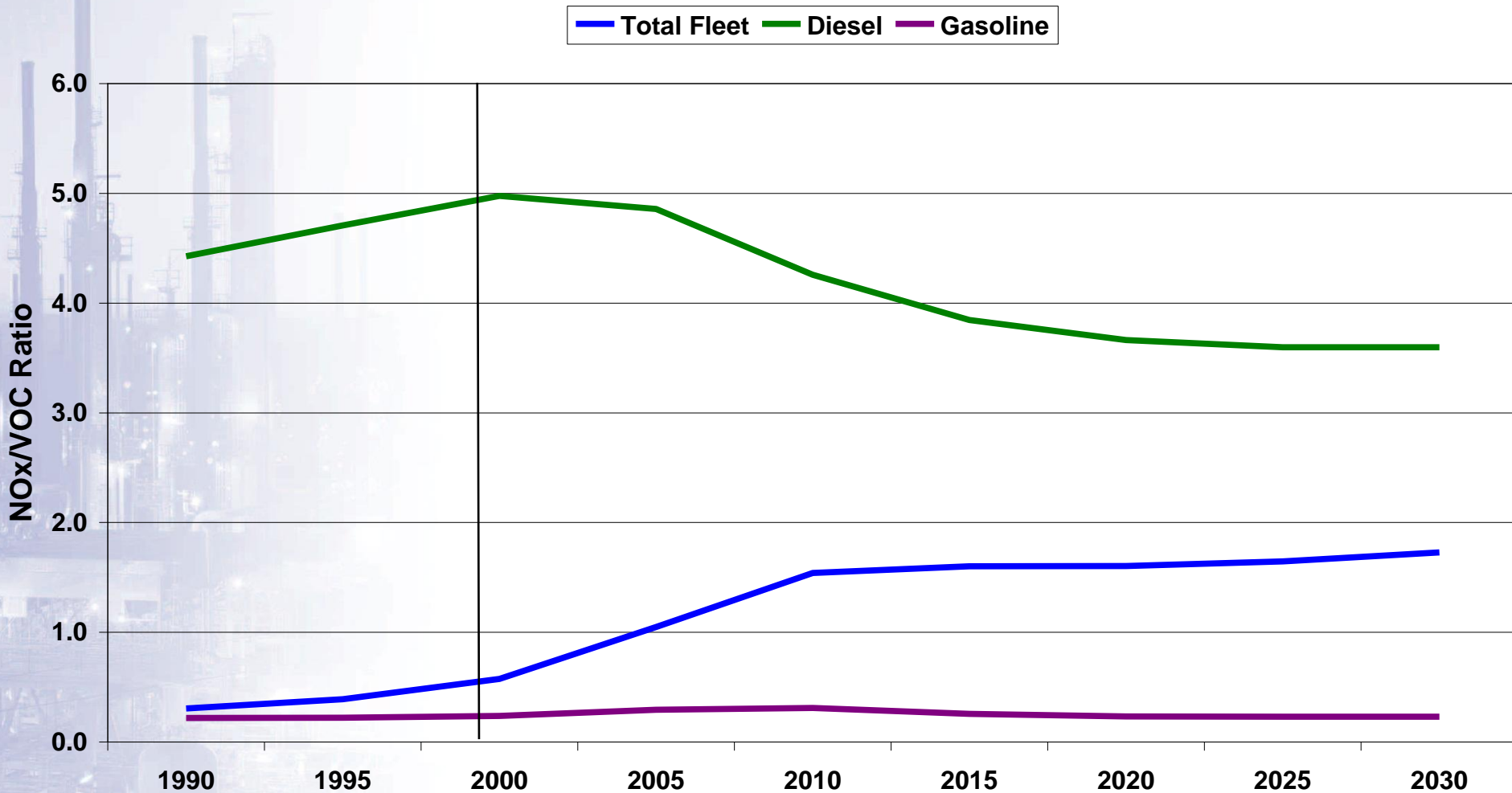
Kjeller, April 28<sup>th</sup> 2014

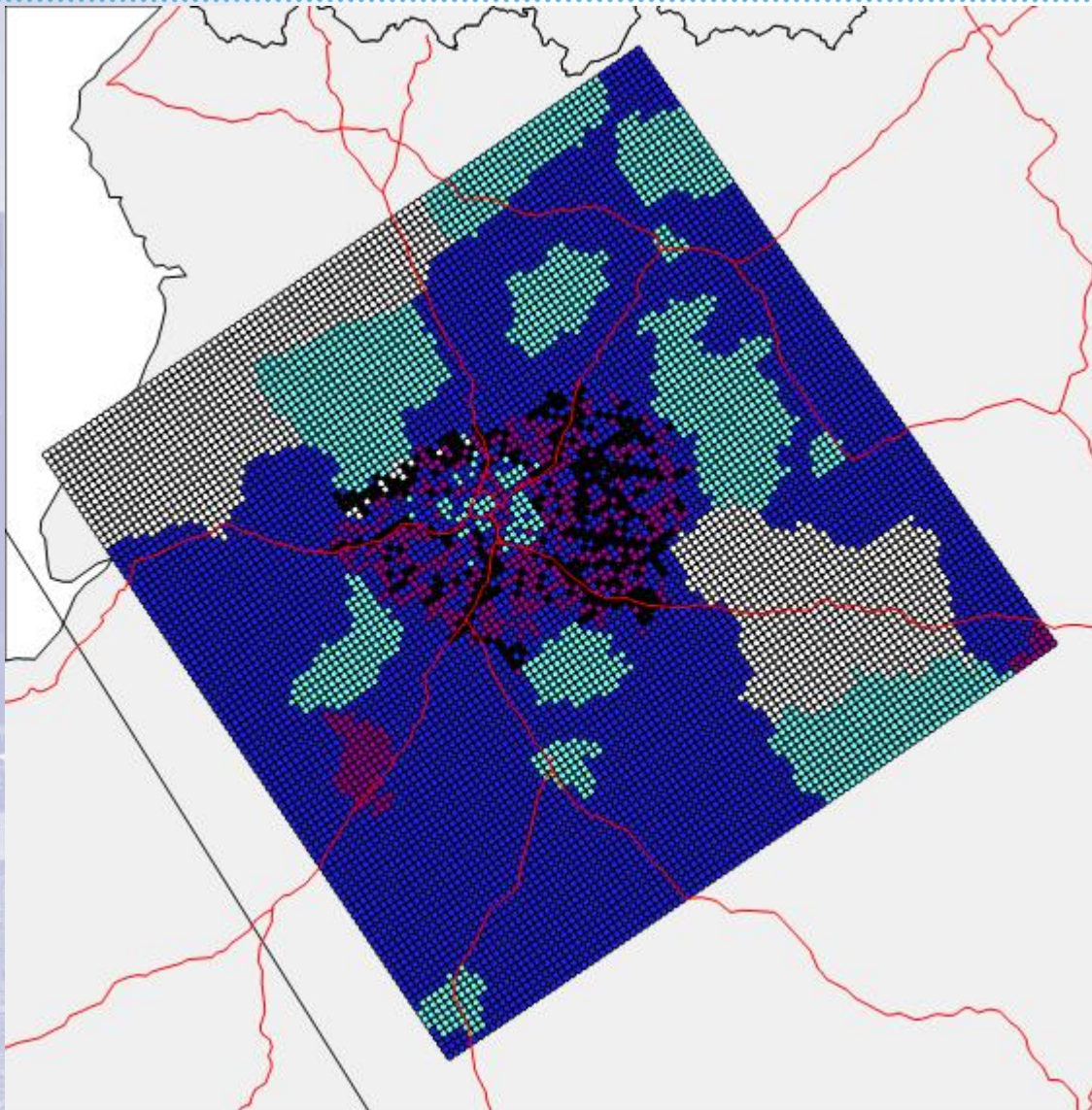
Les White

- ▶ During City-Delta and Euro-Delta the use of emission ratios (e.g. for road transport NO<sub>x</sub>/VOC and NO<sub>x</sub> to PM) were very useful indicators
- ▶ Offers another tool to ensure robust combining of 'top down' and 'bottom up' gridding approaches
- ▶ Also useful in ensuring temporal disaggregation is consistent for all pollutants
- ▶ Following examples are taken from the work undertaken during City Delta
- ▶ Intended to be illustrative to stimulate discussion!



**Ratio of NOx /VOC from Urban Road Transport in France**  
 (Source Concawe Road Transport Emission Forecasting Tool: Contribution to CD, 2004)

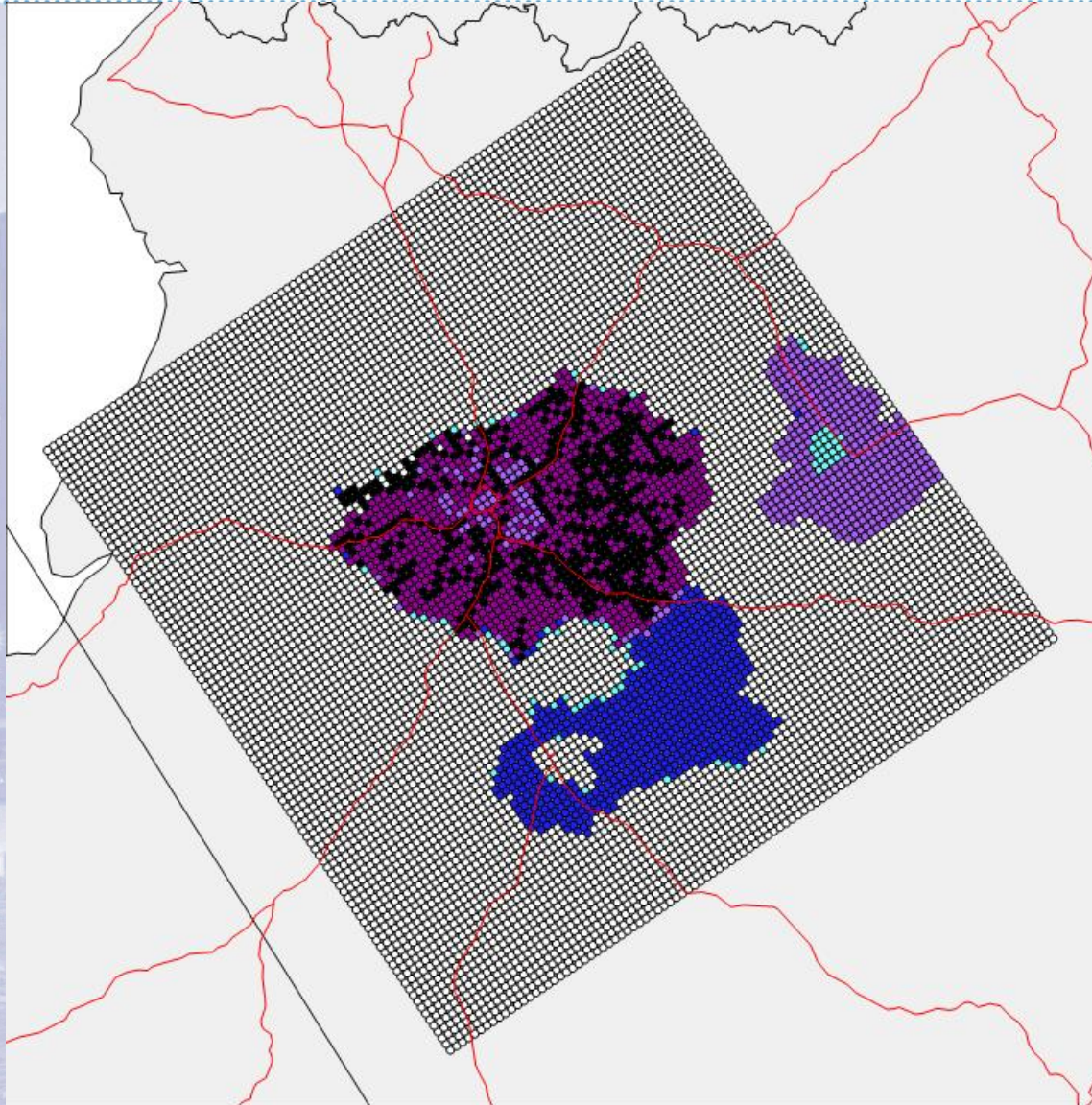




- 0.4 to 0.7
- 0.3 to 0.4
- 0.2 to 0.3
- 0 to 0.2
- 0 to 0

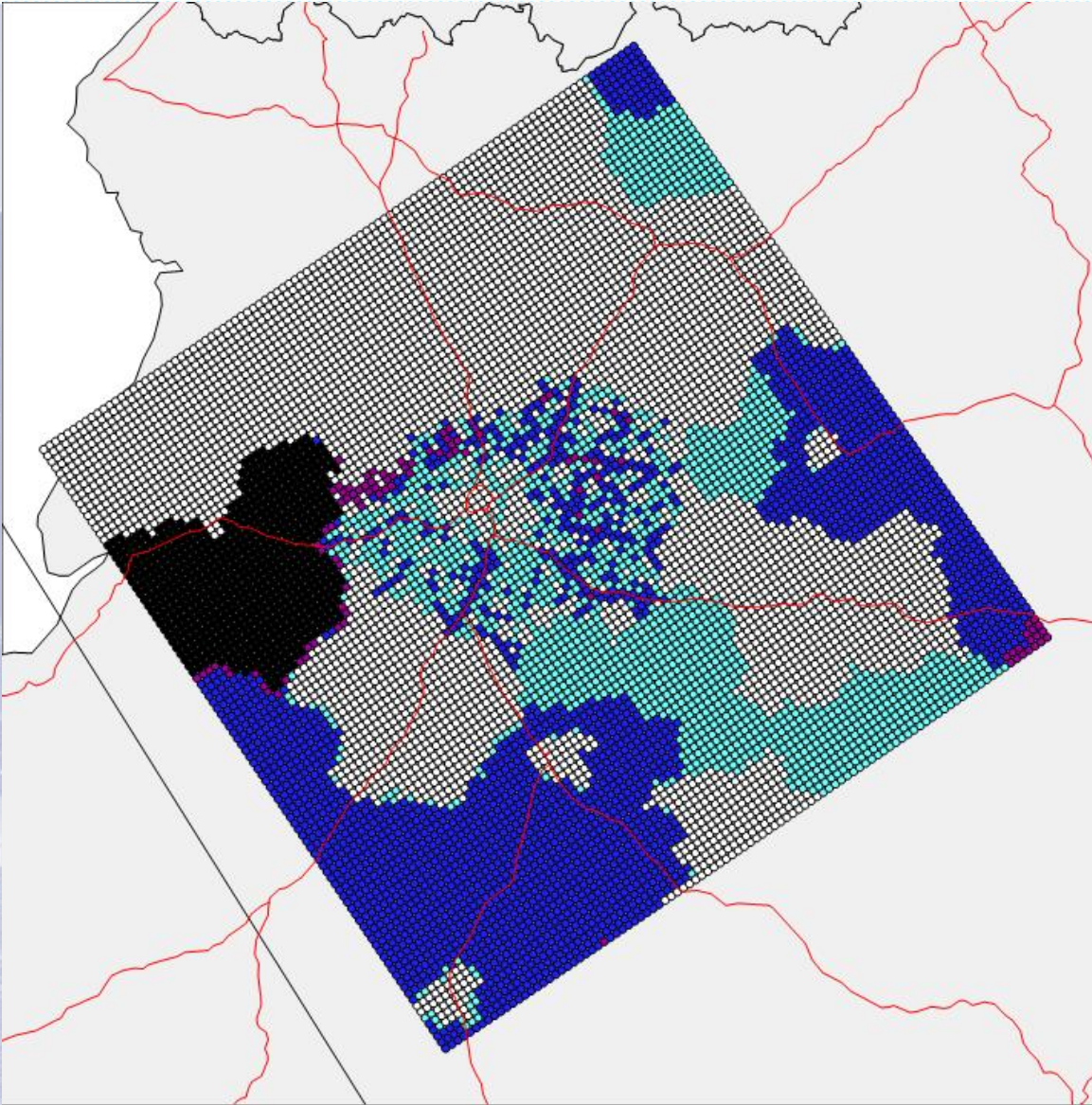


# concauwe Diesel Road Transport NOx/VOC Paris Inventory



- 2.5 to 3.2
- 2 to 2.5
- 1.5 to 2
- 1 to 1.5
- 0.5 to 1
- 0 to 0.5





- 0.4 to 0.6
- 0.3 to 0.4
- 0.2 to 0.3
- 0.1 to 0.2
- 0 to 0.1

