

WG2 Emissions

Summary of FAIRMODE technical meeting

28-29th April 2014

WG2 Emission

Agenda 28th April - morning

Time	WG2 Emission	Speaker
09:30-10:30	WG2 -Traffic emissions : Methodology	
09:30-09:50	European Research on Mobile Emission Sources (ERMES)	C. Galassi
09:50-10:10	Methodologies for calculating traffic emissions in Milano	M. Bedogni
10:10-10:30	Inter-comparison between HERMES (2005) and TNO-MACC-II traffic emission data (analysis of Madrid and Barcelona urban areas)	M. Guevara
10:30-11:00	Coffee Break	
11:00-12:30	WG2 -Traffic emissions : AQ and Climate change	
11:00-11:20	Evaluation of AQ and Climate measures concerning fuel choices in Oslo	M. Vogt
11:20-11:40	Review of methodologies for shipping and harbor emissions	J. Moldanova
11:40-12:00	Traffic emissions AQ and climate change (tbc)	P. Viaene
12:00-12:30	Discussion on traffic methodologies	Common discussion
12:30-13:30	Lunch Break	

WG2 Emission

Agenda 28th April - afternoon

Time	WG2 Emissions	Speaker
13:30-15:00	WG2 – Benchmarking: Proposal for inter-comparisons	
13:30-14:00	Possible indicators for benchmarking emissions	P. Thunis
14:00-14:30	Examples of benchmarking	K. Cuvelier
14:30-15:00	Evaluation of emission in different cities	Common discussion
15:00-15:30	Coffee break	
15:30-17:00	WG2 – Benchmarking: Proposal for further work	
15:30-15:50	Use of indicators to evaluate emission in city areas	L. White
15:50-16:00	Feed-back from WG3	C. Belis
16:00-17:00	Contributions to FAIRMODE work on emissions	Common discussion

WG2 Emission

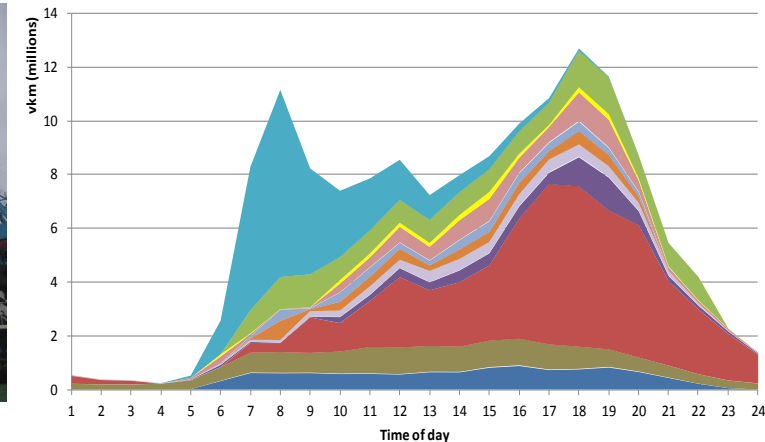
Agenda 29th April - morning

Time	Title	Speaker
09:00-10:30	WG2 –Cross-Cutting issues	
09:00-09:30	Interaction of emission information and station representativeness studies	O. Kracht
09:30-10:00	Requirements on emission data for forecasting applications	F. Meleux
10:00-10:30	Models and measurements expectations on emission data	A. Monteiro
10:30-11:00	Coffee Break	

WG2 Workshop Summary

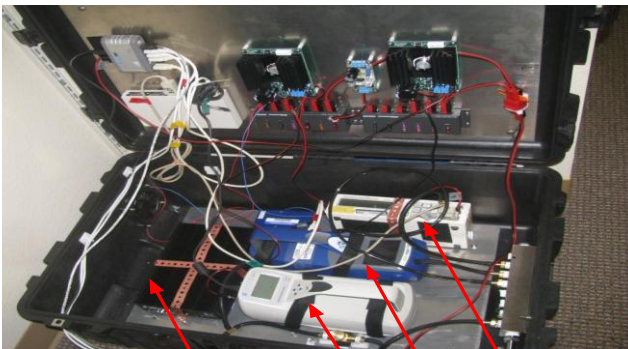
WG2 focuses at present on the compilation of emission data

- Urban scale emission data
- Mobile sources
- Emission methodologies to understand emission processes



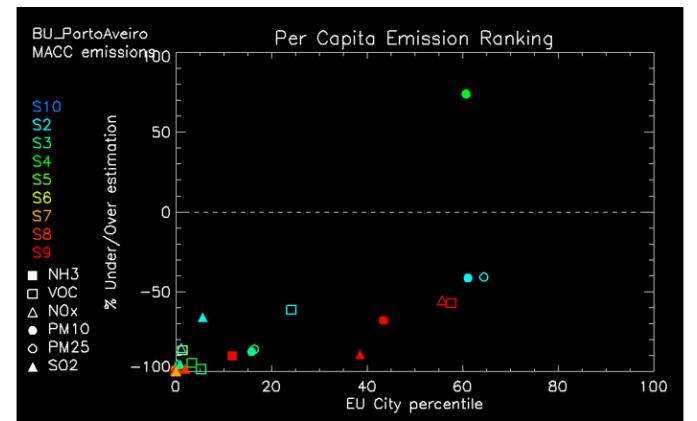
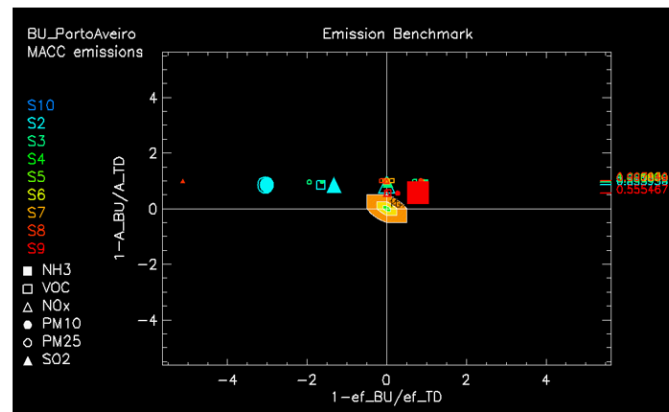
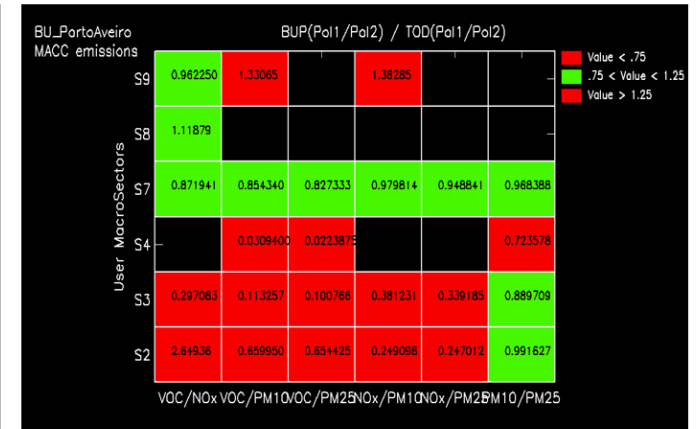
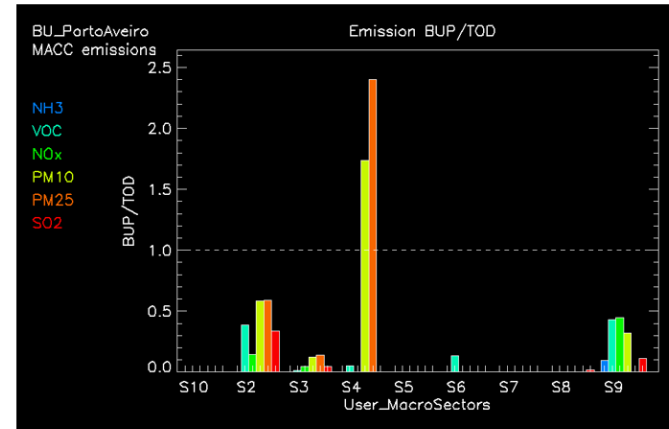
WG2 Workshop Summary

- WG2 is at present focusing on benchmarking activities
- Comparability and Consistency issues are focussed at present
- In 2015 we will begin discussing accuracy issues



Computer CPC DRX OPC

PORTO UnivAVEIRO



WG2 Workplan from FAIRMODE document

- In 2014, WG2 will work to compile a review of existing traffic emission compilation methodologies.
 - Expected deliverable: First overview of good practices for determining traffic emissions.
- In 2015, WG2 envisages a first stage of benchmarking to take place in selected participant cities including comparison with the TNO-MACC-II emission inventory.
 - Expected deliverable: Overview of the main reasons for the identified differences between national and urban traffic inventories in the selected cities.

Questions we discussed to agree on the workplan for 2014/2015

- What are the priorities for the further development of the urban emission benchmarking tool in 2014?
- What type of guidance would you expect to see from FAIRMODE WG2 at the end of 2015 ?

Task 1 - Benchmarking

We decided to form a **working group** for the development of the emission benchmarking tool

- Development team (Alain, Kees, Leonor, Les, Marco and Philippe)
- Items to prioritize were identified
- Deliverable: **The tool is to be circulated by November 2014**

We also identified a **testing team** that will both download and test their data in the benchmarking tool and will send urban emission data to a common repository

- Testing team (Marc, Malgorzata, Jana, Alessandra, Matthias, Peter...and more!)
- Deliverable: **Common repository data send by January 2015**
Presentations on experience by February 2015

Task 2 – Competence building

- No guidance documents can be produced from FAIRMODE 😊 ... But through benchmarking and use of the tool we can reflect on current good practices –
- We aim to discuss good practices at meeting in Baveno ½ day before the Plenary in 2015
- **Deliverables:**
 - 1) Peer reviewed article on good practices for mobile emissions by the end of 2015
 - 2) Information in the WG2 FAIRMODE website

Task 3 – Cooperation

- Cooperation with ERMES program with focus on testing their emission factors (EF)
 - a) feedback to ERMES labs
 - b) comparability analysis
 - c) requests for new Efs
- Participation at next ERMES meeting by FAIRMODE WG2 Chairs



Cooperation WG2-WG3- CCM&M

Proposal for working with validation/accuracy issues in 2015/16

- Common session WG2-WG3 and CC M&M in 2015 technical meeting
- Including validation in the benchmarking tool

Possible questions to address in the common session

- Q1. For urban areas and focusing on traffic exhaust emissions, what type of assessment can be used to improve emission estimates?
- Q2. How do we use source apportionment methods to improve emission estimates for different source types and pollutants?
- Q3. What type of emission profile observations can provide data to improve source apportionment?
- Q4. Can satellite observations provide consistent data on atmospheric composition for improved emissions inventories?
- Q5. What type of improved emissions inventories can be valuable for urban areas?
- Q6. Can we improve emission data for road transport by using a valuable technique to improve emission data?



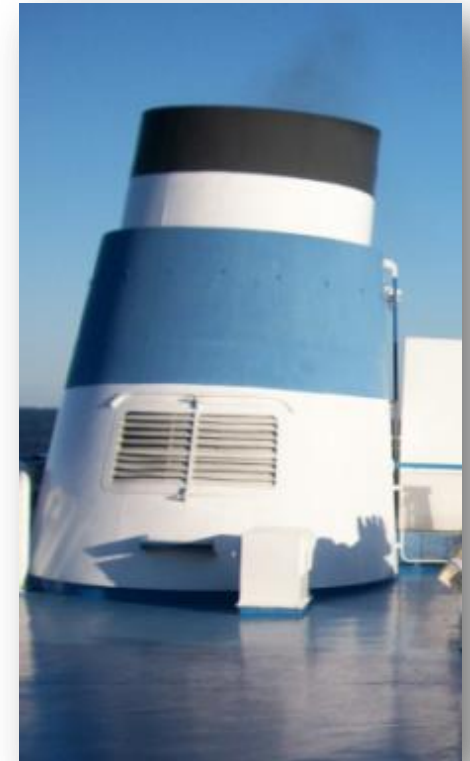
Cooperation WG2-WG3

Proposal for working with validation/accuracy issues in 2015/16

- Common session WG2-WG3 and CC M&M in 2015 technical meeting
- Including validation in the benchmarking tool

Possible questions to address jointly

1. Real world emission measurements
2. Repository of European source profiles (shipping emissions, crustal emissions...)



Thank you all for your participation!