



# A review of the Delta tool: possible improvements

---

Helge R. Olesen





# Suggestions submitted in March

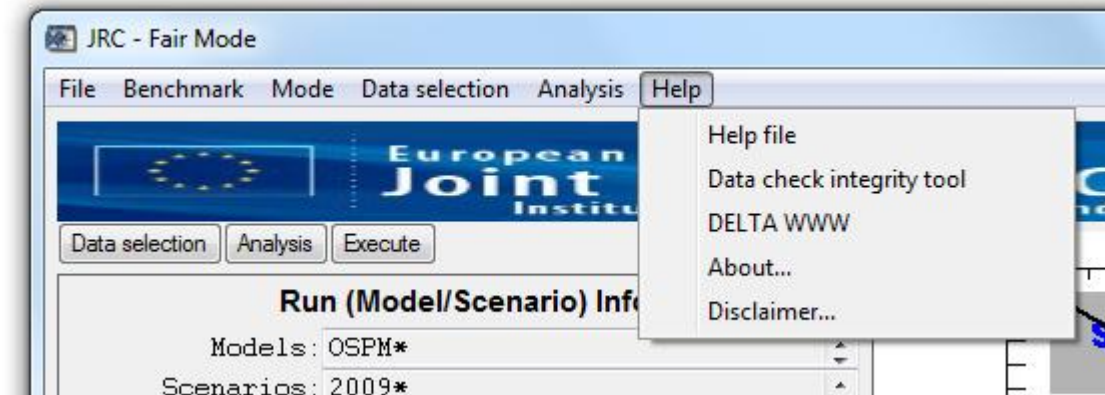
---

- › User's Guide with suggestions in *Track Changes* style. Also suggestions for improved navigation when using Help.
- › Additional comments:
  - Software problems
  - Desirable improvements
- › Feedback from Philippe: Some problems solved, others not yet.



# User's Guide

---



- › The pdf file opened from Help is not the newest version of the User's Guide.
- › Version normally shown
- › Pdf version with improved navigation (including some new suggestions for text)

# Top level menu poorly explained

---



## *New text to explain top level menu:*

When starting Delta Tool the upper righthand corner contains a menu that allows you, e.g. to run a Benchmark, and to save and retrieve selections you have made.

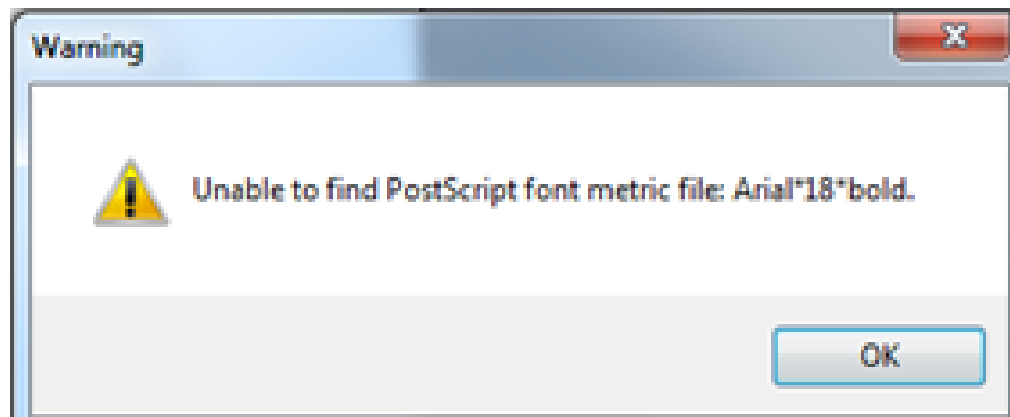
The menu is not available if the window “Data selection” or the window “Analysis” is open. You must close these two windows in order to use the top menu.

---

# Software problems

---

When running Benchmark with Delta version 3.6 it is not possible to produce any output (problem now reported solved).





## Problem with utility *csv to netcdf*

---

- › Severe problems with utility **modcsv2cdf.sav** (to convert model results from csv format to netcdf format).
- › There is no explanation submitted with the tool and its use is far from obvious.
- › I had to revert to a previous version of the tool.



DELATOOOL\_MODcsv2cdf \*\*\* VERSION 1.1

HOME\_DIR =

STARTUP\_FILE =

INIT\_RUN =

END\_RUN =

INPUT\_DIR =

FILE\_ID =

IN\_FILE =

OUTPUT\_DIR =

MODEL/OUTPUT =

OUT\_FILE =

in File

Progress

# Desirable improvements

## > Version identification

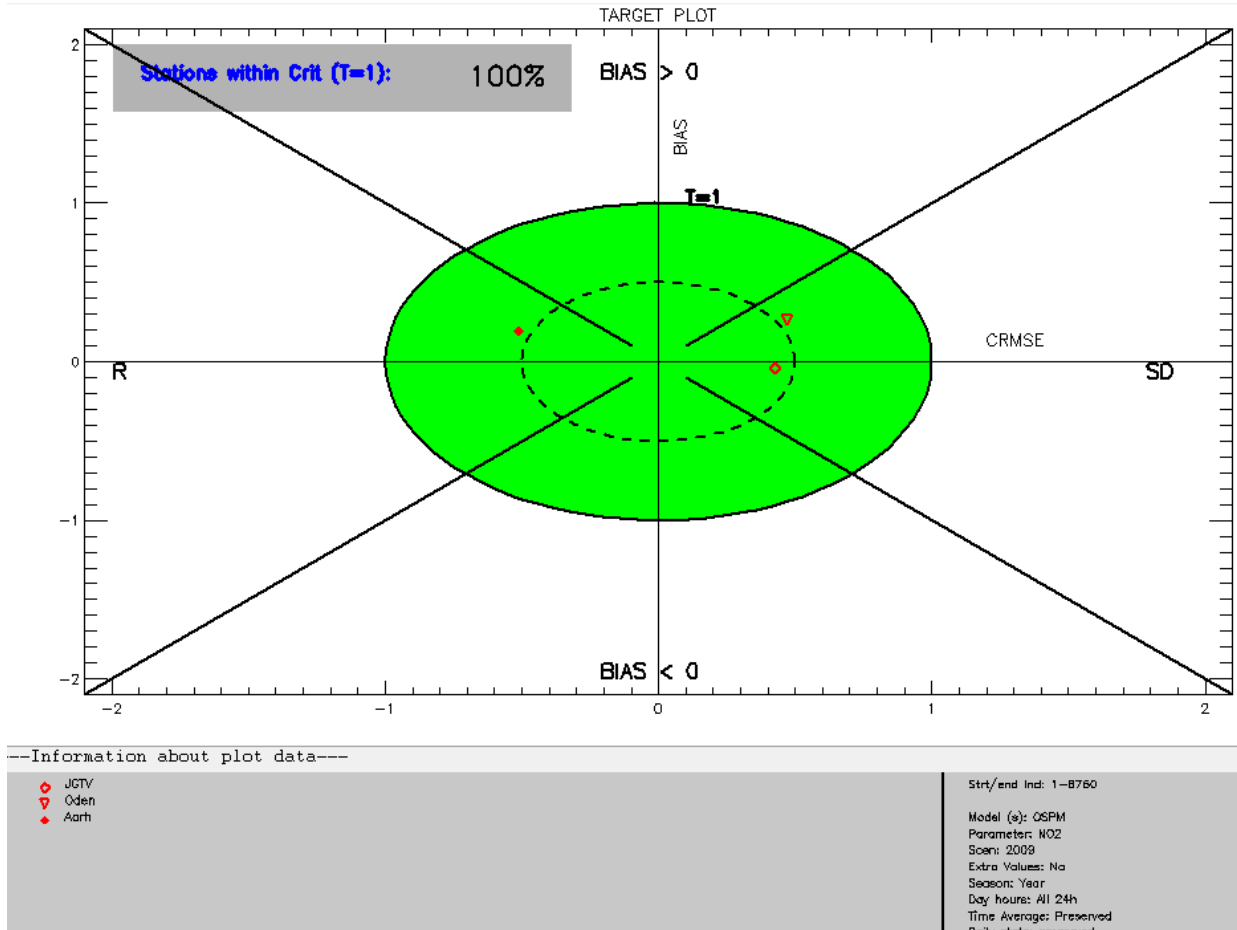
- In **About** menu ver. 3.6 says



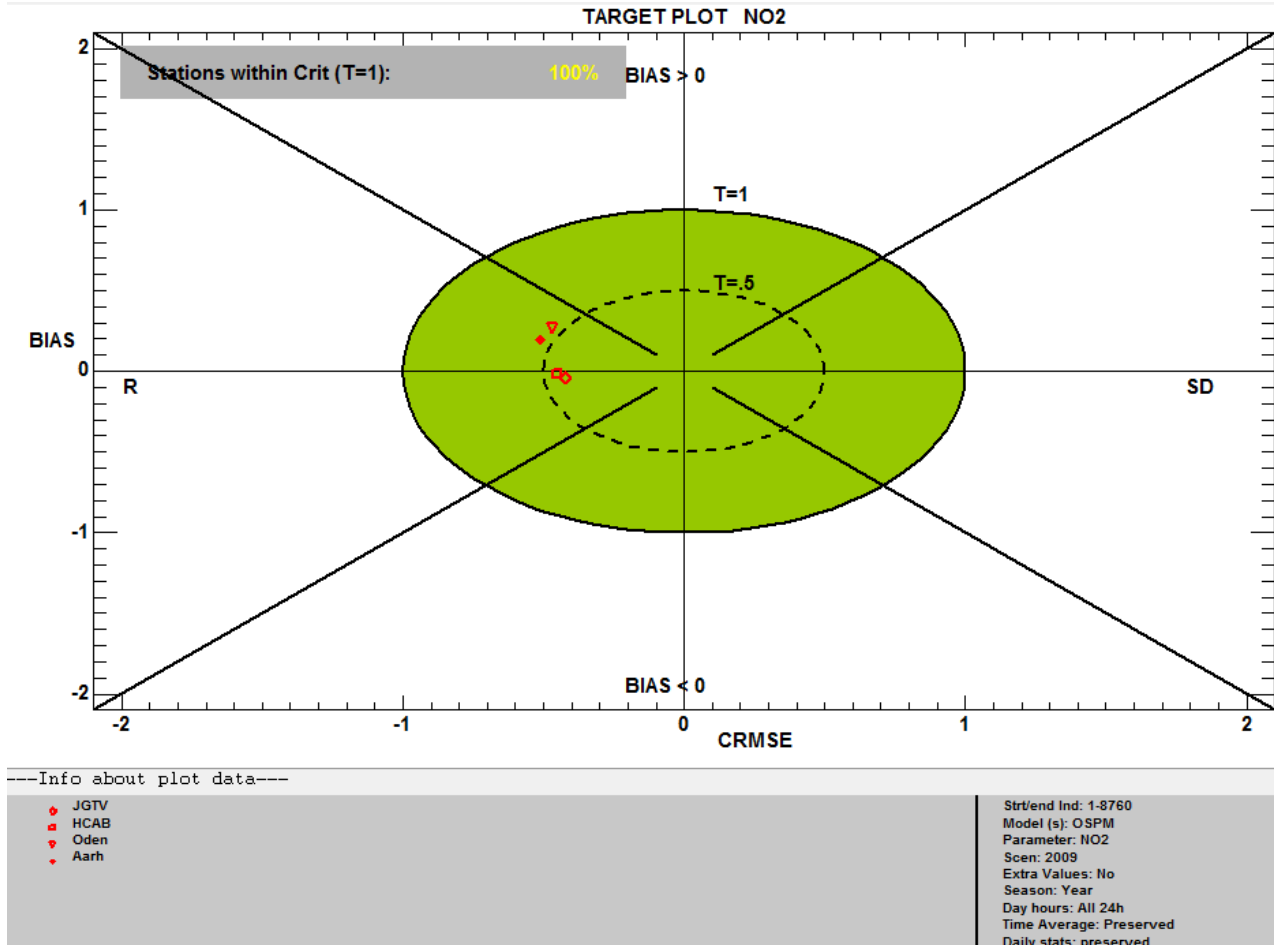
- Version identification on plots highly desirable



# OSPM run for 5 stations, Delta 3.3



# OSPM run for 5 stations, Delta 3.6





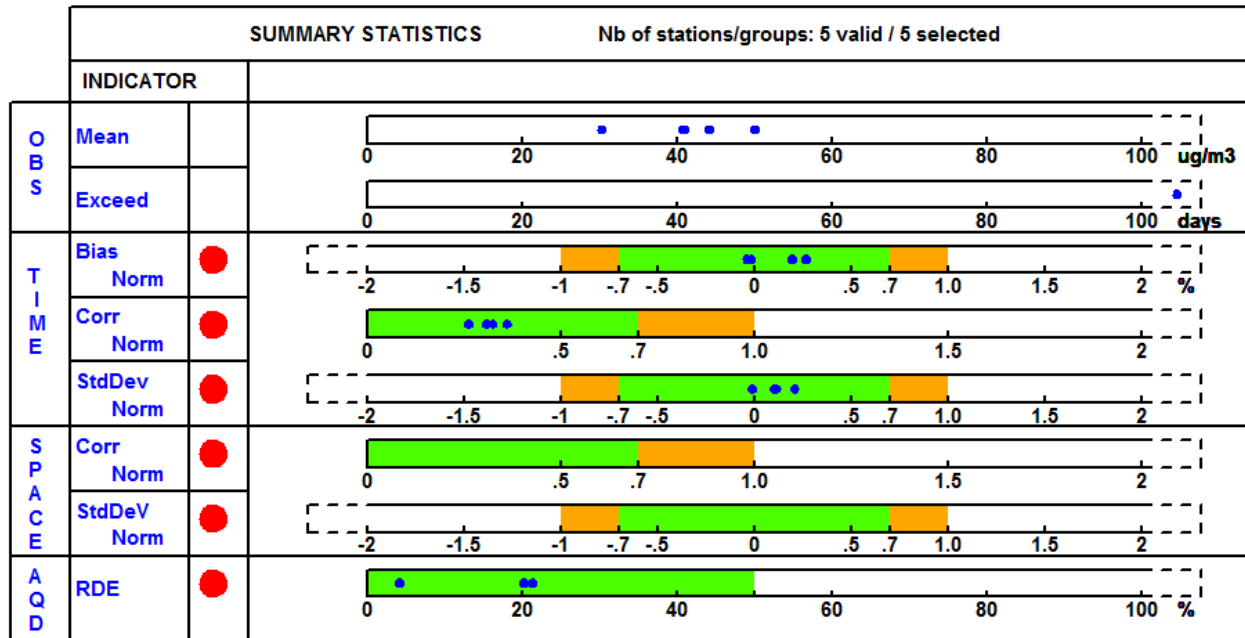
## Questions that a user should be able to answer

---

- › Which version was the plot created with?
- › Why are the points located differently in the two versions of the Target plot?
- › Why is one station missing in the plot of version 3.6? And two stations in the plot of version 3.3?

**A good and easily accessible explanation of the Target plots and the summary diagram is very important.**

# Ver 3.6 – Summary diagram



---Info about plot data---

- JGTV
- HCAB
- Aalb
- Oden
- Aarh

# Summary diagram including analysis info.

Data selection |  Analysis |  Execute

### Run (Model/Scenario) Info

Models: OSPM\*  
 Scenarios: 2009\*  
 Runs: OSPM(2009)\*

MOD without OBS

### Observation Info

single obs: JGTV  
 HCAB  
 group obs: No group\*

### Elaboration/Parameter Info

Statistic: Hourly - Year (NO2...)  
 Diagram: Summary Report (OU)  
 Var(s): NO2\*

EXTRA

Extra val#1: 40.0000    Extra val#2:    Extra val#3:

Goals, Criteria...

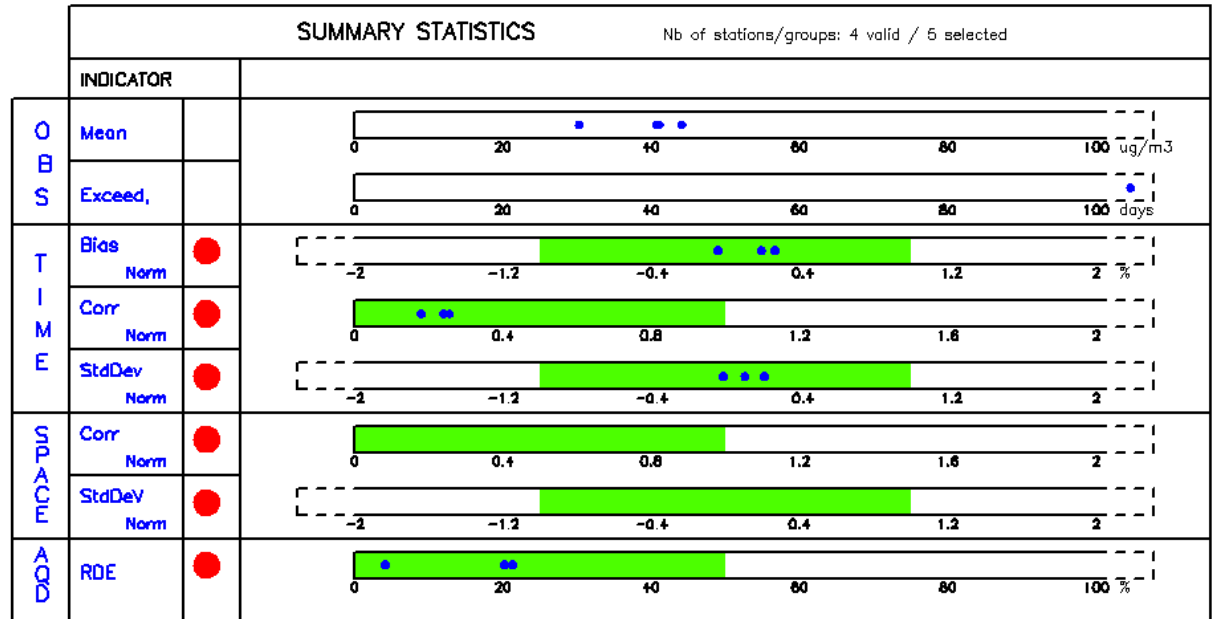
Stat: Preserve    Time: preserve (none)

### Date/Period Selection

Season: All  
 Hour type: All

Date: Hour: 0, Day: 1, Month: 1  
 23, 31, 12

**Stats**



---Information about plot data---

- JGTV
- Aalb
- Oden
- Aarh



## Desirable improvement: Flexibility in naming of input files

---

- › A user will often wish to work with several sets of setups and model runs.  
Users cannot easily give their files the names they want, but have to do a lot of manual renaming and copying of files in order to work within the rather stiff framework of current naming conventions.  
This is inconvenient and likely to cause occasional errors.
- › Changing this is probably a major undertaking, and we may discuss workarounds.