

Spatial representativeness test - Slovakia, selected domain

Jana Matejovičová, Jana Krajčovičová, Katarína Belohorcová,
Juraj Beňo, Vladimír Nemček

29.1.2024, FAIRMODE WG8

SLOVENSKÝ HYDROMETEOROLOGICKÝ ÚSTAV

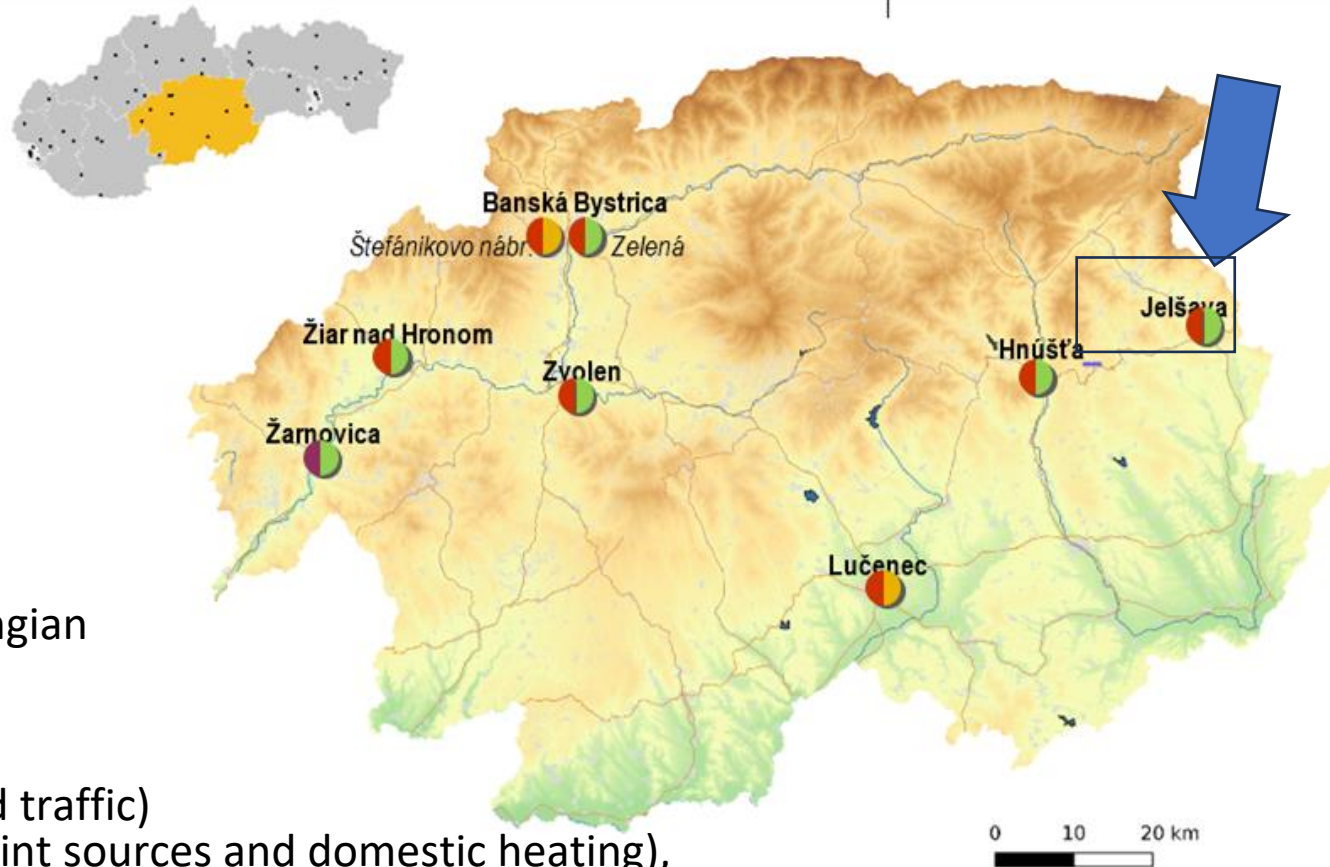
General information

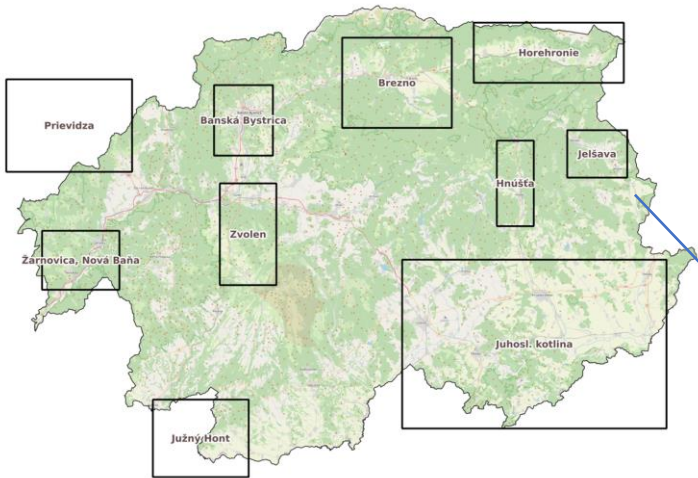
Slovakia/
zone Banskobystrický kraj
computational domains
Jelsava, BB

Measurement station

- Jelšava – UB
- Pollutants: PM, NO₂, BAP
- Year: 2021
- Type of model used: Lagrangian
- Model scale / resolution:

10 x 10 m AtmoStreet (road traffic)
250 x 250 m – CALPUFF (point sources and domestic heating),
interpolated to 10 x 10m.





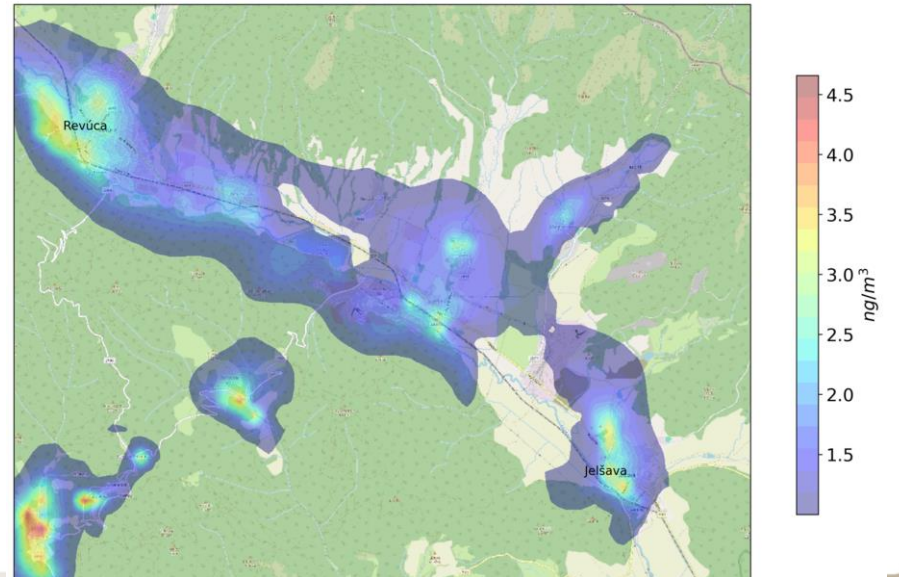
Target value [$\text{ng}\cdot\text{m}^{-3}$]	2017	2018	2019	2020	2021
Banská Bystrica, Štefánikovo nábrežie	2.9	2.1	1.7	1.6	1.7
Banská Bystrica, Zelená			1.1	1.2	1.3
Jelšava, Jesenského		3.9	4.0	3.0	2.8
Zarnovica, Dolná					2.2

$\geq 90\%$ of valid measurements

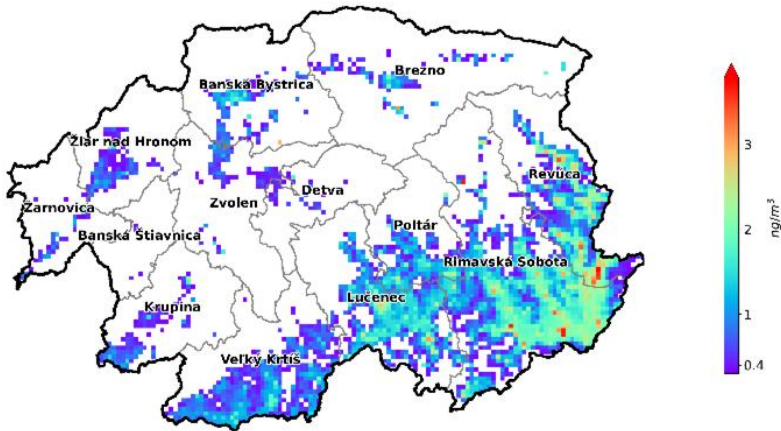
CALPUFF - lagrangian

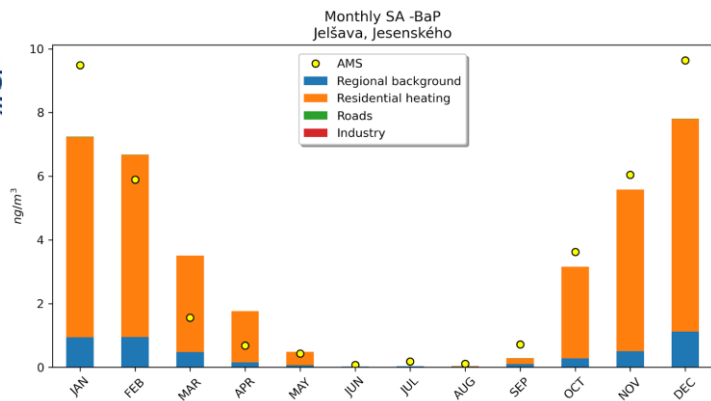
UB Jelšava

Priemerné ročné koncentrácie BaP - 2021 - celkovo
($c > 1.0 \text{ ng}/\text{m}^3$)



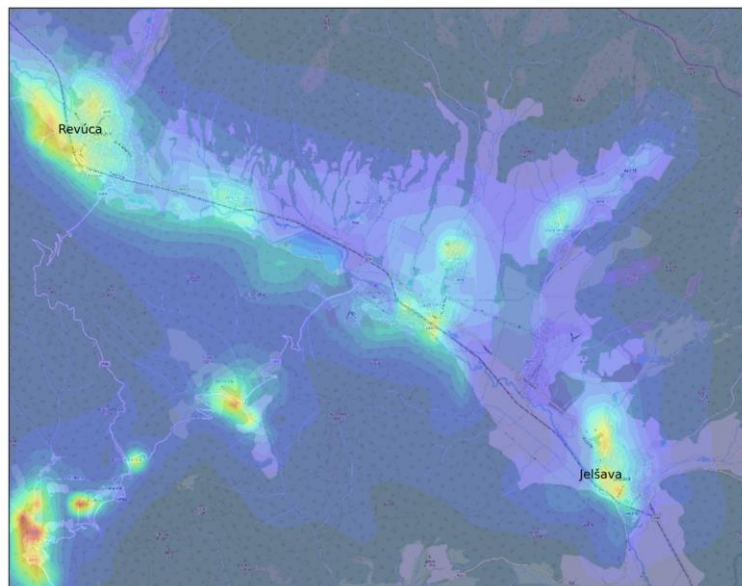
RIO - interpolation





CALPUFF, BaP annual mean

Annual mean BaP - 2021 - total
($c > 0 \text{ ng/m}^3$)

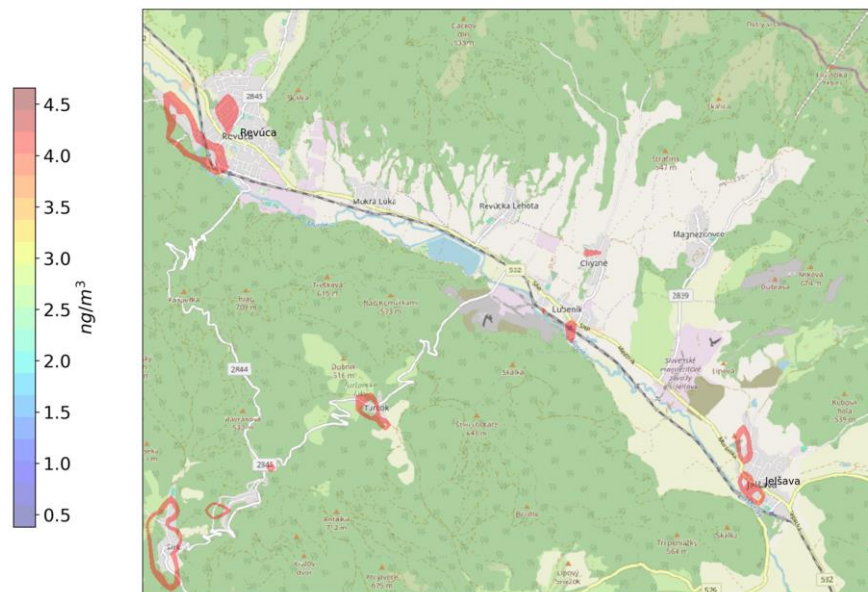


	tol	SRA (km ²)
BaP	10%	1.5

UB, Jeľšava,

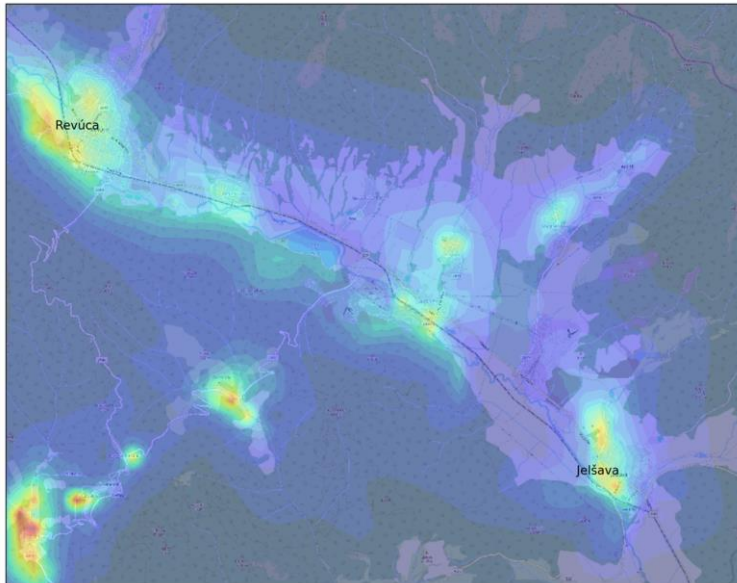
BaP

BaP - 2021 - SR
(Tolerance 10.0%; 2.5 - 3.1 ng/m^3)



CALPUFF, BaP annual mean

Annual mean BaP - 2021 - total
($c > 0 \text{ ng/m}^3$)



	tol	SRA (km ²)
BaP	15%	2.5

UB, Jelšava,

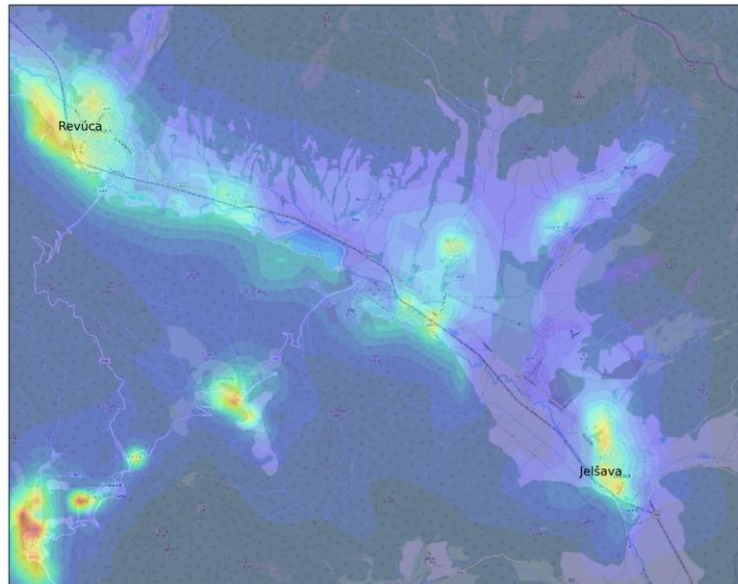
BaP

BaP - 2021 - SR
(Tolerance 15.0%; 2.4 - 3.2 ng/m^3)



CALPUFF, BaP annual mean

Annual mean BaP - 2021 - total
($c > 0 \text{ ng/m}^3$)



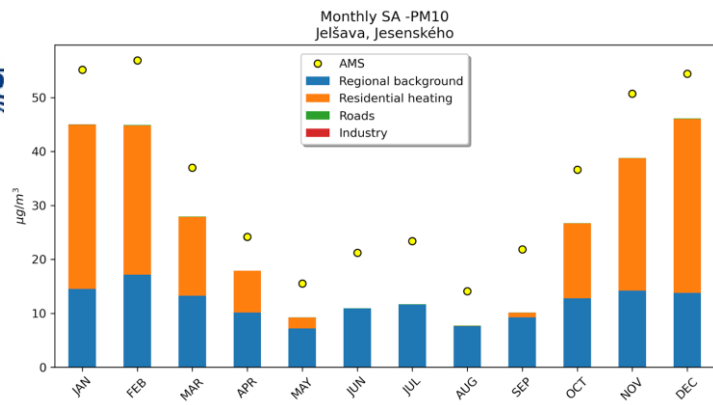
	tol	SRA (km ²)
BaP	20%	3.5

UB, Jelšava,

BaP

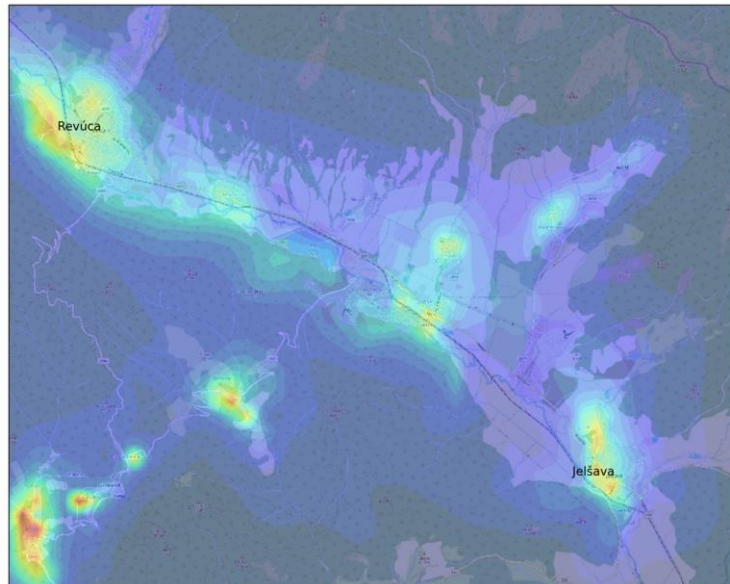
BaP - 2021 - SR
(Tolerance 20.0%; 2.2 - 3.4 ng/m^3)





CALPUFF, PM₁₀ annual mean

Annual mean PM10 - 2021 - total
(c > 0 µg/m³)



	tol	SRA (km ²)
PM ₁₀	10%	2.1

UB, Jeľšava,

PM₁₀

PM10 - 2021 - SR
(Tolerance 10.0%; 22.2 - 27.2 µg/m³)



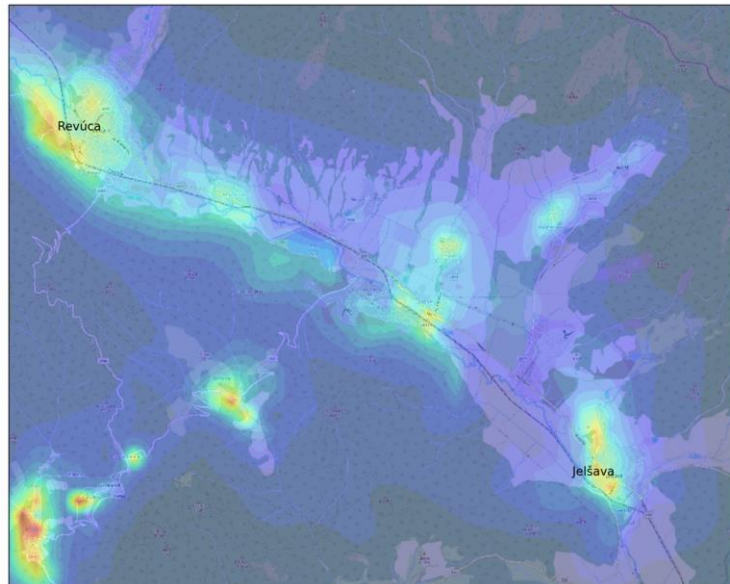
	tol	SRA (km ²)
PM ₁₀	15%	3.4

CALPUFF, PM₁₀ annual mean

UB, Jelšava,

PM₁₀

Annual mean PM10 - 2021 - total
(c > 0 $\mu\text{g}/\text{m}^3$)



PM10 - 2021 - SR
(Tolerance 15.0%; 21.0 - 28.4 $\mu\text{g}/\text{m}^3$)



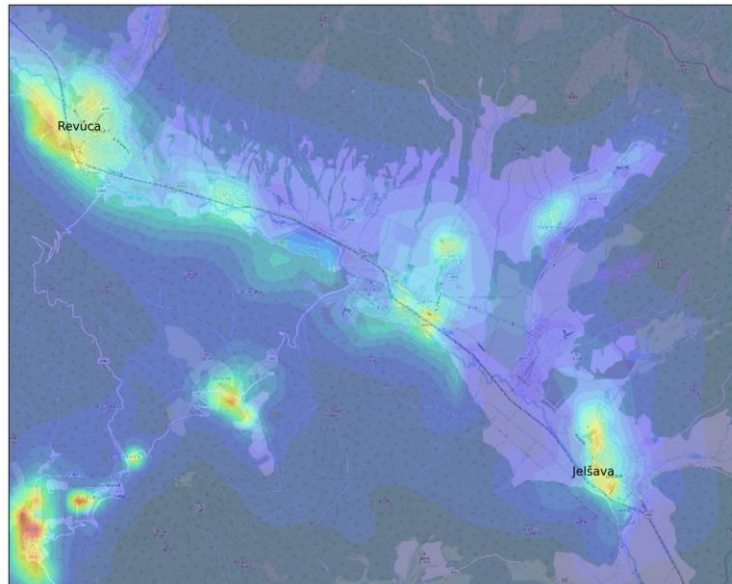
	tol	SRA (km ²)
PM ₁₀	20%	5.1

CALPUFF, PM₁₀ annual mean

UB, Jelšava,

PM₁₀

Annual mean PM10 - 2021 - total
(c > 0 $\mu\text{g}/\text{m}^3$)

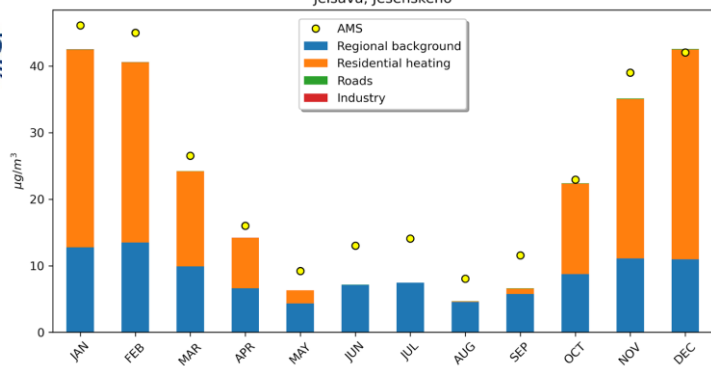


PM10 - 2021 - SR
(Tolerance 20.0%; 19.8 - 29.6 $\mu\text{g}/\text{m}^3$)





Monthly SA -PM25
Jelšava, Jesenského



CALPUFF, PM_{2.5} annual mean

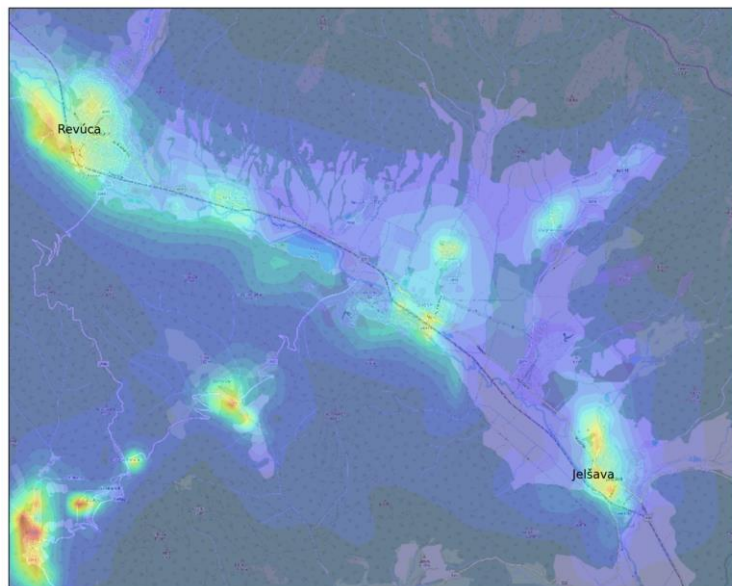
	tol	SRA (km ²)
PM _{2.5}	10%	2.0

UB, Jelšava,

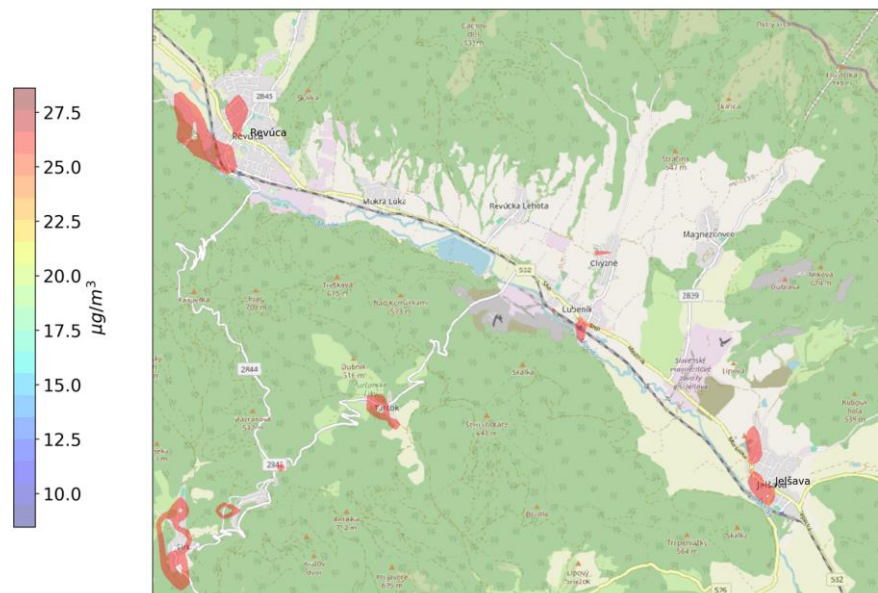
model bias – 3.2 µg/m³

PM_{2.5}

Annual mean PM25 - 2021 - total
(c > 0 µg/m³)



PM25 - 2021 - SR
(Tolerance 10.0%; 18.9 - 23.1 µg/m³)



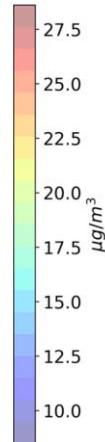
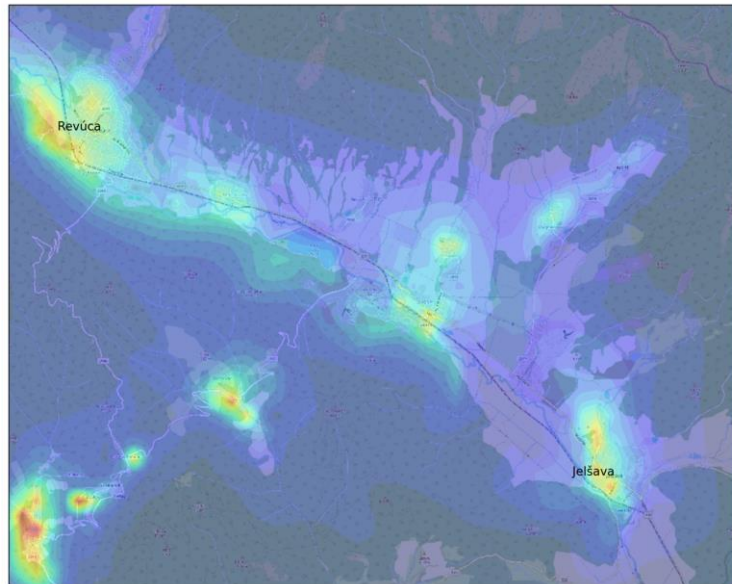
CALPUFF, PM_{2.5} annual mean

	tol	SRA (km ²)
PM _{2.5}	15%	3.2

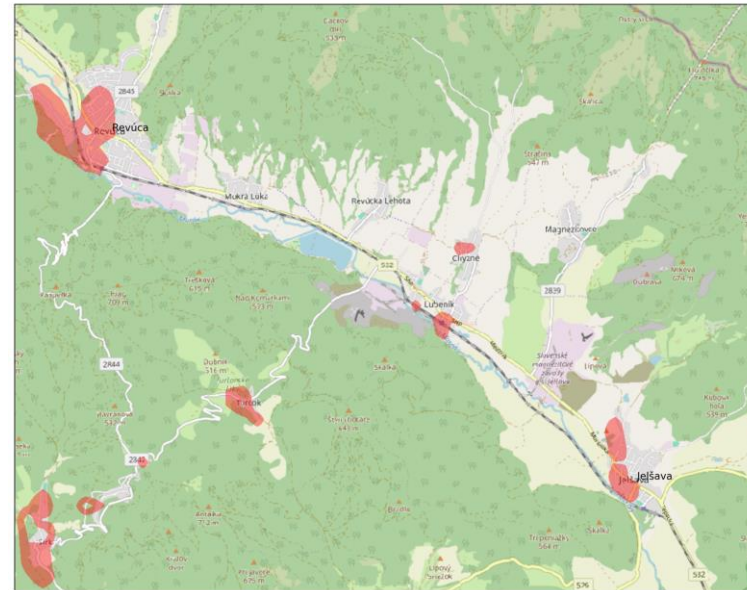
UB, Jelšava,
model bias – 3.2 ug/m³

PM_{2.5}

Annual mean PM25 - 2021 - total
(c > 0 $\mu\text{g}/\text{m}^3$)



PM25 - 2021 - SR
(Tolerance 15.0%; 17.8 - 24.1 $\mu\text{g}/\text{m}^3$)



CALPUFF, PM_{2.5} annual mean

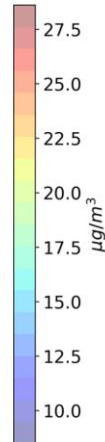
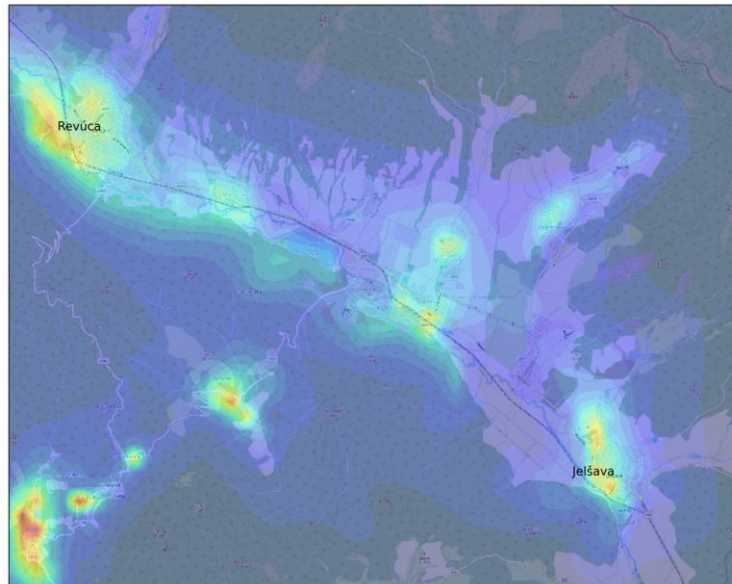
	tol	SRA (km ²)
PM _{2.5}	20%	4.6

UB, Jelšava,

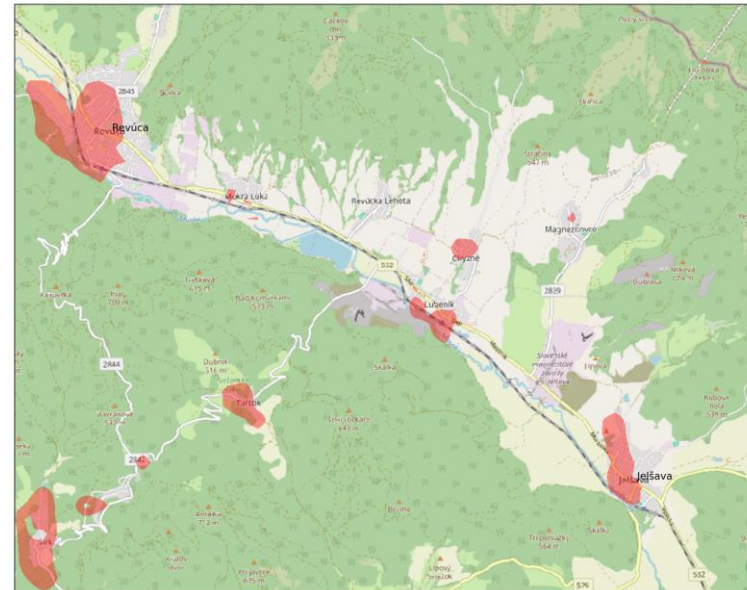
model bias – 3.2 ug/m³

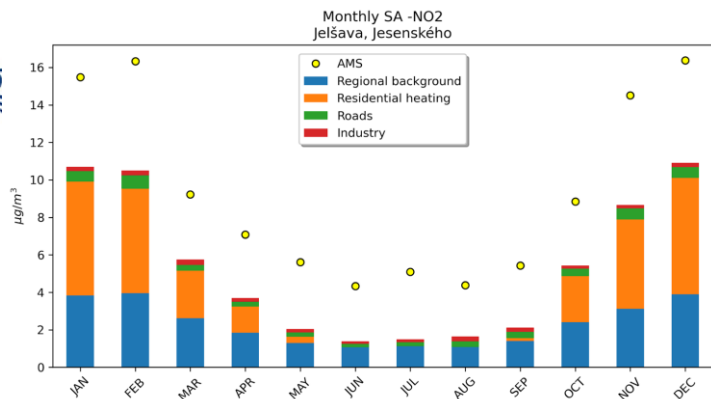
PM_{2.5}

Annual mean PM25 - 2021 - total
(c > 0 $\mu\text{g}/\text{m}^3$)



PM25 - 2021 - SR
(Tolerance 20.0%; 16.8 - 25.2 $\mu\text{g}/\text{m}^3$)





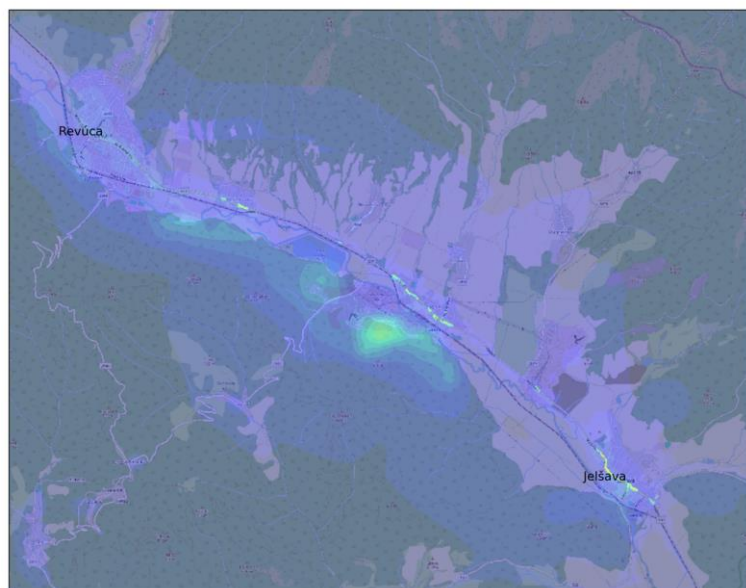
CALPUFF, NO₂ annual mean

	tol	SRA (km ²)
NO ₂	10%	8.1

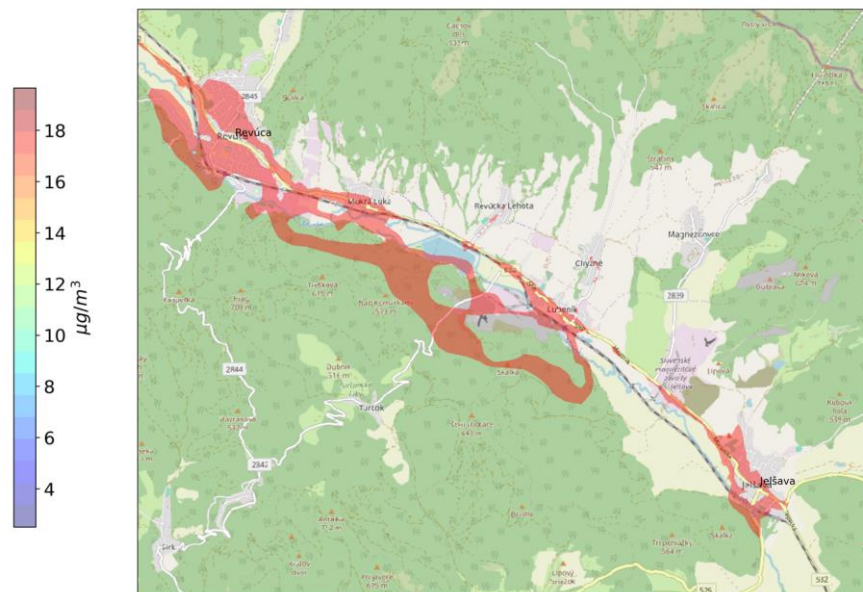
UB, Jelšava,
model bias – 4 µg/m³

NO₂

Annual mean NO2 - 2021 - total
(c > 0 µg/m³)



NO2 - 2021 - SR
(Tolerance 10.0%; 4.8 - 5.8 µg/m³)



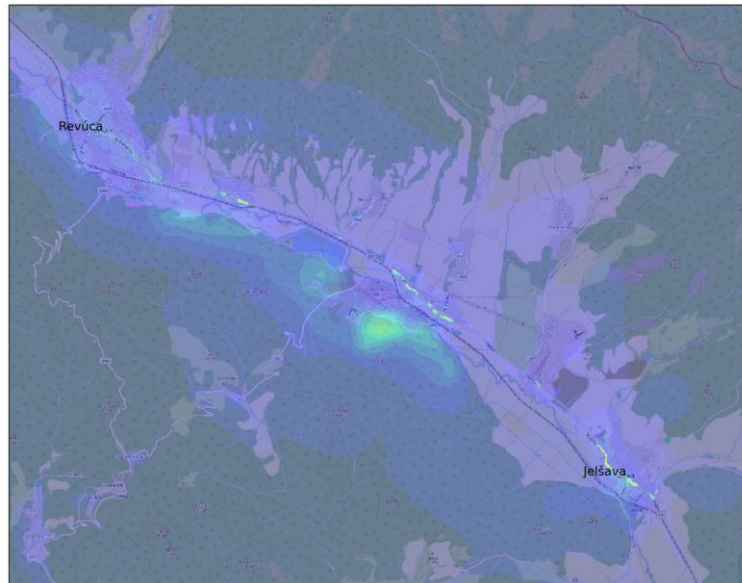
CALPUFF, NO₂ annual mean

	tol	SRA (km ²)
NO ₂	15%	12.2

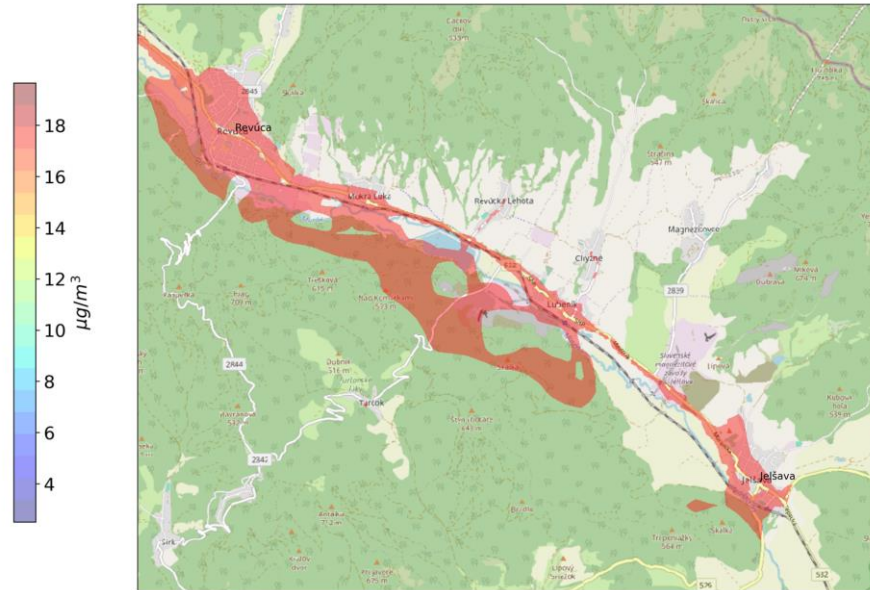
UB, Jelšava,
model bias – 4 ug/m³

NO₂

Annual mean NO₂ - 2021 - total
(c > 0 $\mu\text{g}/\text{m}^3$)



NO₂ - 2021 - SR
(Tolerance 15.0%; 4.5 - 6.1 $\mu\text{g}/\text{m}^3$)



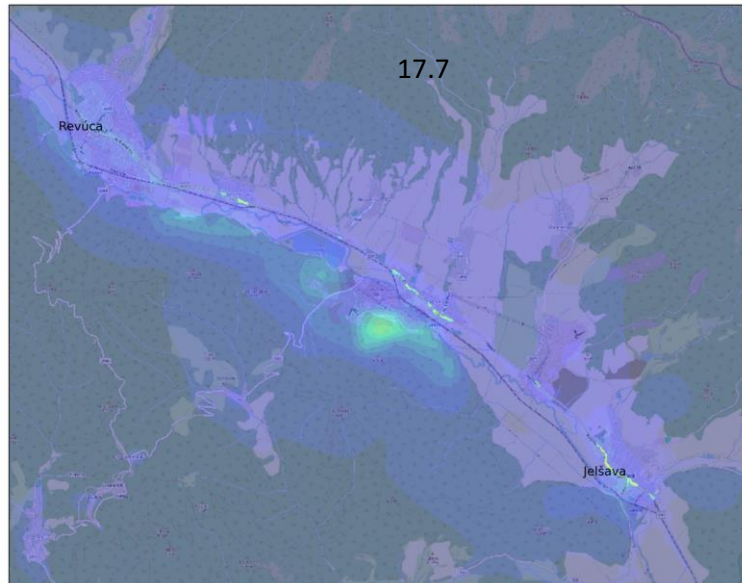
CALPUFF, NO₂ annual mean

	tol	SRA (km ²)
NO ₂	20%	17.7

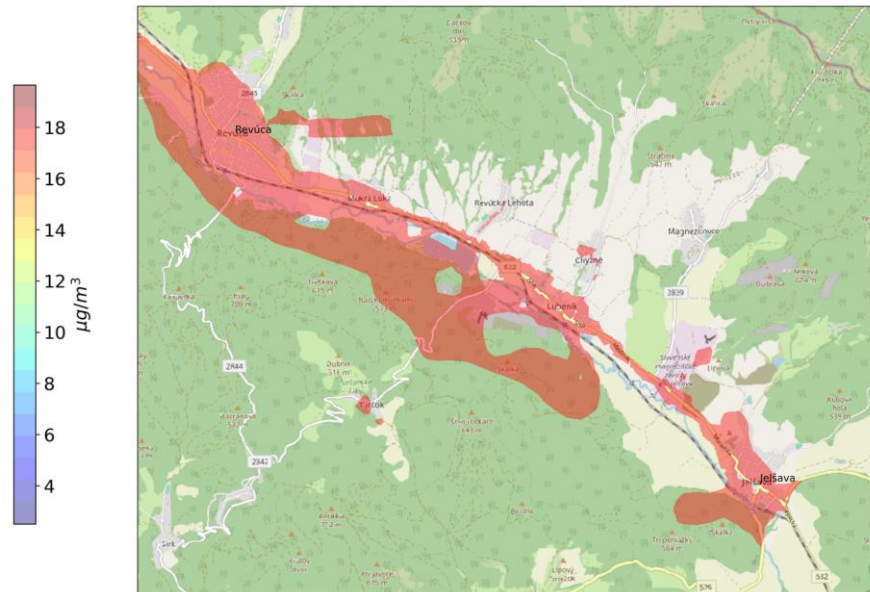
UB, Jelšava,
model bias – 4 $\mu\text{g}/\text{m}^3$

NO₂

Annual mean NO₂ - 2021 - total
($c > 0 \mu\text{g}/\text{m}^3$)



NO₂ - 2021 - SR
(Tolerance 20.0%; 4.2 - 6.4 $\mu\text{g}/\text{m}^3$)



Summary

Pollutant	tol	SRA (km ²)	
		CALPUFF	RIO
PM ₁₀	10%	2.1	5.0
PM ₁₀	15%	3.4	9.0
PM ₁₀	20%	5.1	12.0
PM _{2.5}	10%	2.0	3.0
PM _{2.5}	15%	3.2	10.0
PM _{2.5}	20%	4.6	20.0
NO ₂	10%	8.1	2.0
NO ₂	15%	12.2	6.0
NO ₂	20%	17.7	10.0
BaP	10%	1.5	7.0
BaP	15%	2.5	7.0
BaP	20%	3.5	11.0

Next steps

Bias correction

Changes to the SRA during the year

SRA for SMOG warning system

RIO - interpolation model, *resolution 1x1km*,
(used originally for whole country)

CALPUFF – *resolution 10x10m*
(combination of AtmoStreet used for roads, 10x10m
And CALPUFF for domestic heating and point sources,
resolution 250m x 250m
interpolated to AtmoStreet resolution (10x10m) and summarized.

Computational domain 10 x 13km, Jelšava, Slovakia

