

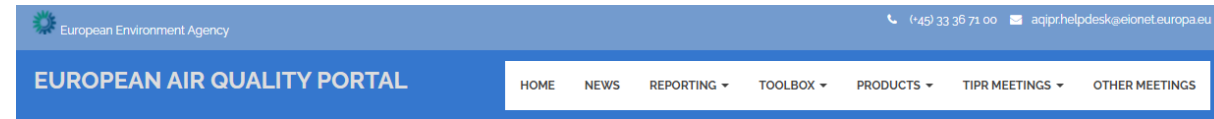


Model documentation requirements and links to e-reporting

FAIRMODE CT2 - 7th October 2021

MQI and MPC in e-reporting - metadata

- It is expected that the revision of the AAQDs will enable an **enhanced use of modelling** data for assessment, source allocation, forecasting and planning purposes
- This imposes further documentation requirements on modelling applications and their QA/QC
- ... and needs to be linked to e-reporting



Following the Covid-19 virus outbreak, we are working remotely. We are doing our best to be operational and carry out our work as before.

This portal contains technical details and services that facilitate the reporting of official air quality information from EU Member States and other EEA member and co-operating countries. This information is submitted according to Directives 2004/107/EC and 2008/50/EC of the European Parliament and of the Council. The rules for this exchange are set out in the [Commission implementing decision 2011/850/EU](#). The portal is maintained by the European Environment Agency (EEA).

Officially published air quality information is available through the [website of the EEA](#).
Comments and suggestions on this website should be addressed to the [AQ IPR helpdesk](#).

<https://aqportal.discomap.eea.europa.eu/>

MQI and MPC in e-reporting - metadata

- E-reporting data on Air Quality Models – Data flows D1b and E1b

Air Quality Models and Objective Estimations (data flows D1b/E1b)

This viewer shows information on Air Quality Models and Objective Estimations reported within AQ e-Reporting

Linked tables Share Download CSV

Country	B-G Namespace	Year	AQ Model Id	Model Process Id
Spain	ES.BDCA.AQD	2019	OBE_ES_SEASALT_NS_PM10_H_LV_daysAbove_2019	OBP_ES_SEASALT_NS_PM10_H_LV_c
Greece	GR.MINNENV.AQ	2019	MDL-CAMx_05012	MDP-CAMx

Showing 1-30 of 603

Filters

Country: [all]

Year: 2019 (603)

AQ Model Id: []

Assessment Type

Modelling (302)

Objective estimation (301)

Air Pollutant Description: [all]

Data Aggregation Process: [all]

Result Encoding

external (284)

inline (319)

<https://discomap.eea.europa.eu/App/AirQualityModels/index.html#.eu/>

MQI and MPC in e-reporting - metadata

- E-reporting data on Air Quality Models – Data flows D1b and E1b

Air quality model configuration - <aqd:AQD_Model>	221
AQD Model identifier - <ef:inspireId>	224
Model name <ef:name>	225
Responsible party <ef:responsibleParty>	225
Air quality assessment type <aqd:assessmentType>	226
Air quality zone <aqd:zone>	226
Model observing capability <ef:observingCapability>	227
Predicted environmental objectives <aqd:environmentalObjective>	234
Data reported to <aqd:reportingDB> & <aqd:reportingDBOther>	235
Organisational level <ef:organisationalLevel>	236
Media monitored / predicted <ef:mediaMonitored>	236
Flagging a technique for AEI, NS / WSS assessment <ef:involvedIn>	237
aqd:assessmentMethodWSS	237
aqd:assessmentMethodNS	238
Model configuration - <AQD_ModelProcess>	239
Model configuration identifier <ompr:inspireId>	242
Model configuration name <ompr:name>	243
Model configuration description <aqd:description>	243
Model configuration documentation <ompr:documentation>	244
Responsible party for the model configuration <ompr:ResponsibleParty>	245
Process type <ompr:Type>	247
Model configuration parameters <ompr:processParameter>	247
Model time resolution <aqd:temporalResolution>	256
Spatial resolution <aqd:spatialResolution>	257
Model data quality uncertainty evaluation description <aqd:dataQualityDescription>	257
Model data quality uncertainty evaluation URL <aqd:dataQualityReport>	259
Model domain - <AQD_ModelArea>	260
Model domain identifier <aqd:inspireId>	262
Geographical extent of the model domain <sams:shape>	263



MQI and MPC in e-reporting - Few reports

Note that EEA also estimates its own

Air Quality Models and Objective Estimations (data flows D1b/E1b)

This viewer shows information on Air Quality Models and Objective Estimations reported within AQ e-Reporting

Linked tables

id	Boundary Conditions	Scaling	Projection (SRID)	Model Description	Time Of Result	EEA's estimation of MQI	Data Quality Description	Data Quality Report URL	Model Reference Title
		None applicable		Roadside concentrations calculated using the PCM-Roads Kernel Model (PCM-RKM) dispersion modelling approach to represent the roadside increment, calibrated with monitoring. The	2020-09-22T12:00:00		The AQD sets data quality objectives (DQOs) for modelling uncertainty, within supplementary assessment under the AQD. AQDD4 sets DQOs in terms of uncertainty, which acts as a guide for	https://uk-air.defra.gov.uk/library/reports?report_id=1007	Technical report on supplementary assessment under the Quality Directive (2008/50/EC) the Air Quality Framework Directive (96/62/EC) Fourth Daughter Directive (2004/107/EC)

Showing 31-60 of 302

<< < 1 2 3 4 5 .. > >>

Filters

Country: [all]

Year: 2019 (302)

AQ Model Id: []

Assessment Type:
 Modelling (302)
 Objective estimation (301)

Air Pollutant Description: [all]

Data Aggregation Process: [all]

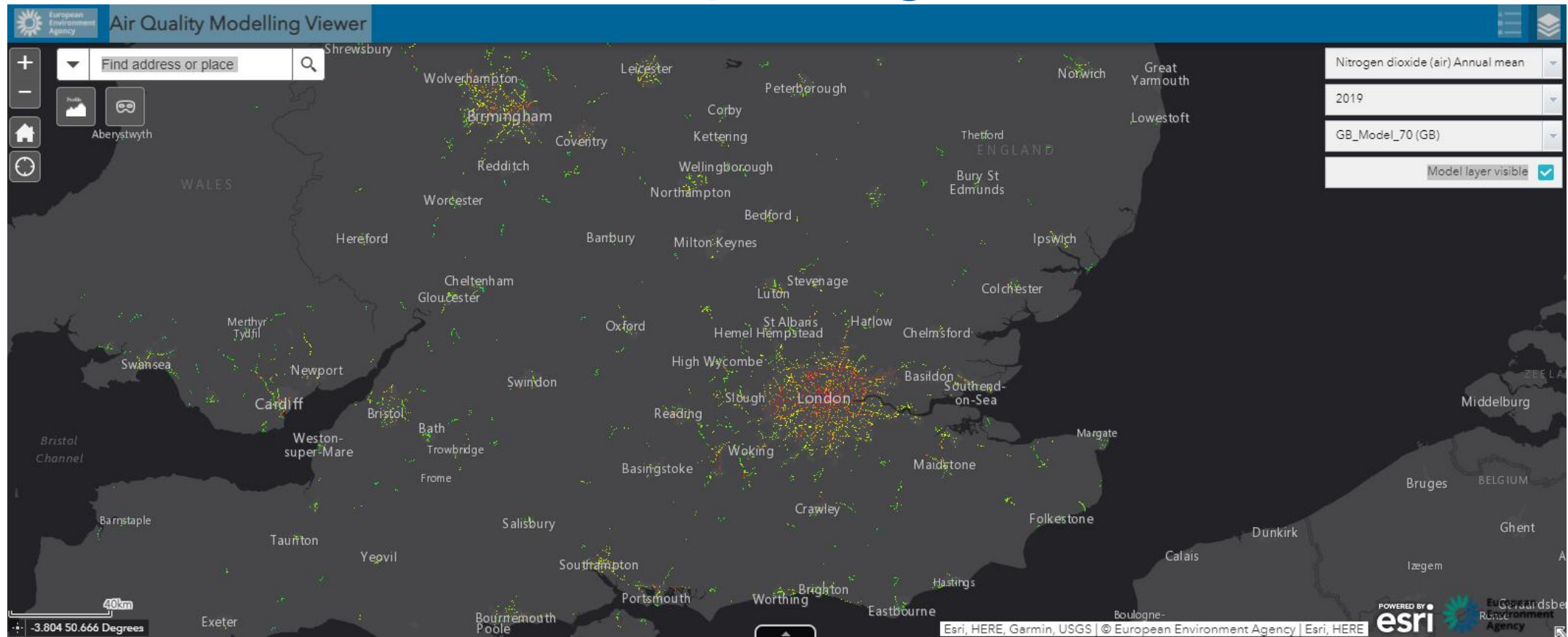
Result Encoding:
 external (260)
 inline (42)

<https://discomap.eea.europa.eu/App/AirQualityModels/index.html#.eu/>

MQI and MPC in e-reporting needs additional information on observations

Basic information	Model name	
	Model version	
	Contact information	
	Model type	Eulerian, Gaussian..
	Model documentation	Schemes, parametrizations
Coverage & Resolution	Spatial coverage	
	Temporal coverage	
	Temporal resolution	
	Spatial resolution	
	Vertical resolution	
Input data	Emissions	
	Meteorology	
	Initial & boundary conditions	
	Data assimilation / fusion	
	Data Quality – MQI and MPC	Actual values
Methodology used		FAiRMODE – other
Observations - measurements		Basis for MQI calculations
Report s		

MQI and MPC in e-reporting - metadata



EEAs Air quality viewer has a different purpose & functionality than *FAIRMODEs composite mapping platform*

<https://maps.eea.europa.eu/AirQualityModellingViewer/>

Discussion on metadata

- Would it be useful to include MQI and MPC information in the FAIRMODE composite mapping?
- How would it inform EEAs own MQI evaluation?
- Would it be useful in the future to recommend reporting of MQI/MPC values?
- if so, what is the preferred format for reporting ? Do numbers alone make sense?

Thank-you