

DELTA tool: database

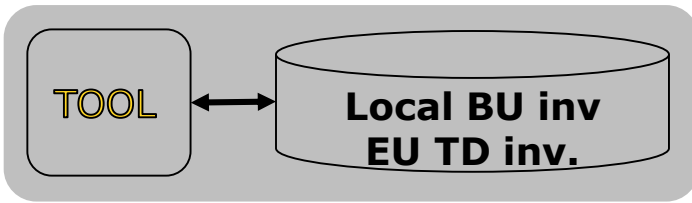
Δ datasets



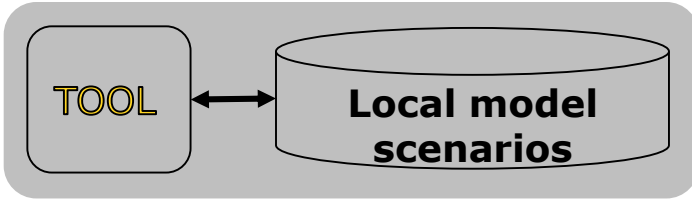
SHARED

REMOTE

Emissions



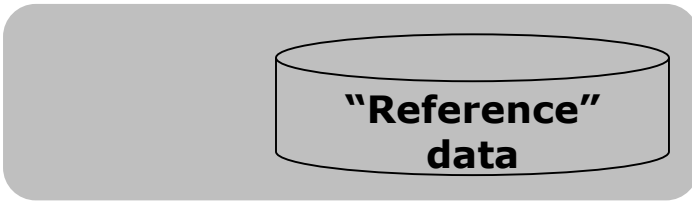
Planning



Δ - Assess



Src. App.



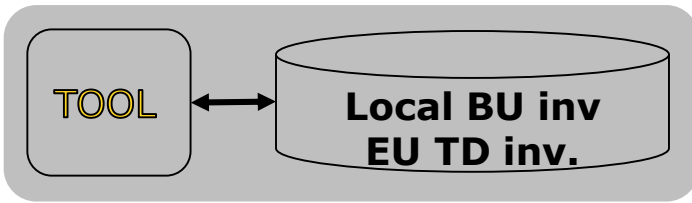
Δ datasets



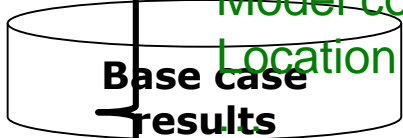
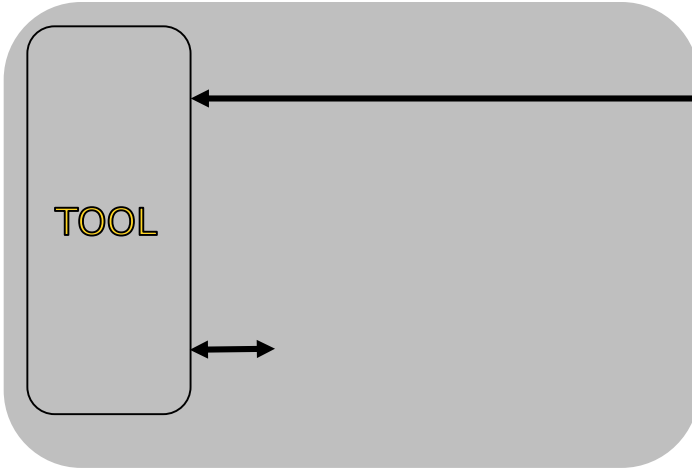
SHARED

REMOTE

Emissions

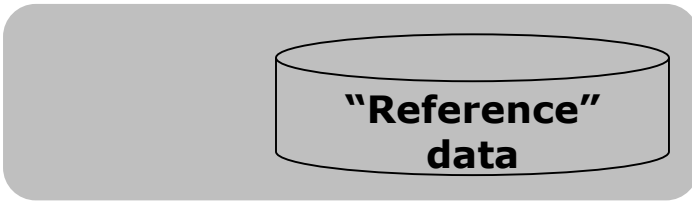


Δ – Assess
– Plan



- Model type
- Model configuration
- Location
- Performance report
- Link to MDS
-

Src. App.



Δ datasets: web exchange platform



Model details

Delta Model

Name: Model 1
City | Region: Milan
Country: Italy
Model type: Eulerian
Frequency: Yearly
Documentation: <http://www.doc.nl/do1.html>
Dataset: Desktop.zip
Release version: 2.0.1
Reference year: 2015
Time start: 01/02/2015
Time end: 01/03/2015
Pollutants: O3

Owner

Name: Luca Spano'
Affiliation: JRC Ispra

Status

Status: Public

Timestamps

Created: 11/06/2015 11:50:07
Last update: 11/06/2015 11:50:07

[CLOSE](#)

European Commission

Δ DELTA Benchmarking

Fairmode Tools and Software

FAIRMODE

LOGOUT | YOUR PROFILE | CONTACT

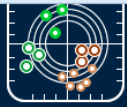
HOME | DELTA | Δ - PLANNING | Δ - EMISSION

Available datasets

Name	City/Region	Country	Start	End	Dataset	Owner
view Model 1	Milan	Italy	01/02/15	01/03/15	download	Luca Spano'

Self installing batch

- Create modelling/monitoring/startup
- Access through MyDeltaInput
- Addition Performance reports



Your Account

Email: philippe.thunis@jrc.ec.europa.eu

Password: [\[Change\]](#)

Your details

First name:

Last name:

Affiliation:

Fairmode:

Your datasets

You have uploaded 0 models.

Software & Tools

Δ - Assessment Δ - Planning Δ - Emission



Database

Upload dataset

Model name:

Country:

Region/city:

Model type:

Output frequency:

Pollutants: O3 PM2.5 PM10 NO2

Documentation link:

Time period (start): - year

Time period (end): - year

Release version:

Reference year:

Status: Members Private

Dataset (.zip): No file selected.

Discussion

- Need for volunteers to populate a Δ database
- Different access rights (Fairmode vs. private)
- No prevention against virus born datasets!
- Will currently be limited to assessment applications