

DELTA tool: updates V5.0 and V5.1

Δ tool: status



Improved methodology

V4.0

- Exceedances MQO
- Access to MQO parameters
- Added species (PM2.5)
- ...

**Robustness
User's friendly**

V5.0 / 5.1

- Installation (time 1000, Sp: 100)
- Robustness
- I/O formatting
- ≠ Version environments
- pdf vs jpeg
- Planning / Forecast

Δ tool: installation



European Commission > JRC Science Hub

Δ DELTA Benchmarking

Fairmode Tools and Software

FAIRMODE

LOGOUT YOUR PROFILE CONTACT

HOME DELTA Δ - PLANNING Δ - EMISSION

Δ Tool Download

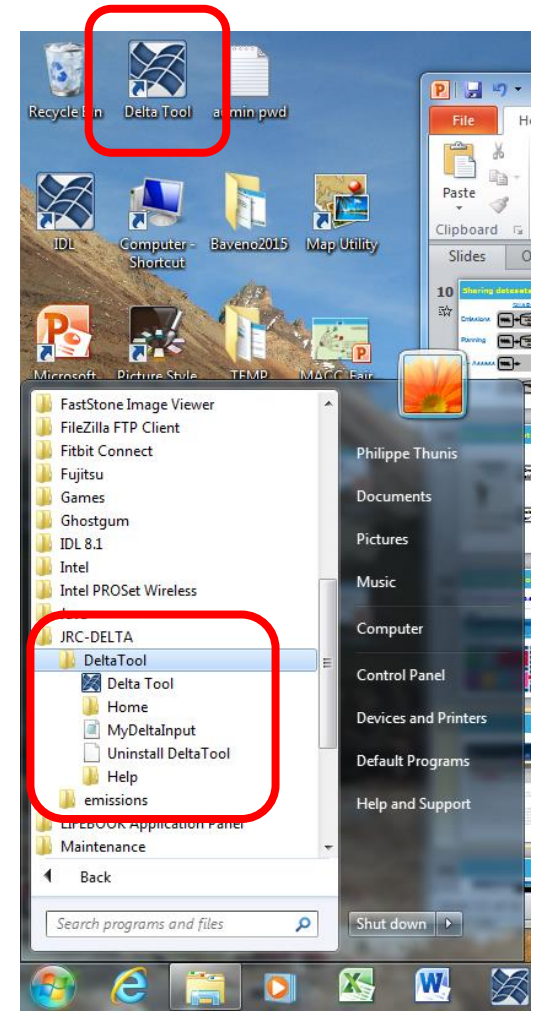
Version	Environment	Date
5.1	Setup_Window	01-06-2015
	Setup_Linux	
	Setup_Mac (test mode)	

Installation under Windows

After running the setup, a "Delta Tool" icon will be created on your desktop and a program menu "JRC-DELTA" will be created in the Window start program menu. You can run DELTA by double-clicking on the desktop icon

Installation under Linux

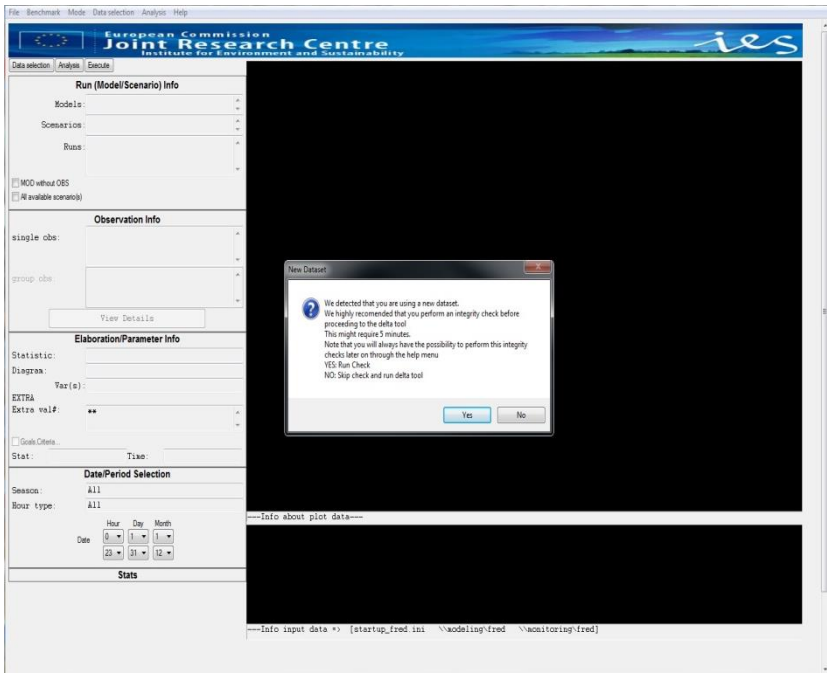
Download and uncompress the setup_linux.tar.gz file in a new directory (e.g. DeltaTool). This will create a DeltaTool.exe as well as a sub-directory structure (resource, configuration, data...). The following operations need to be performed: (1) Edit the "app.folder.ini file and modify the absolute path (e.g. /home/.../DeltaToolV51/). Do not forget the final "/" at path end. (2) Allow execution permission to the file DeltaTool (chmod +x deltaTool) (3) If permission error persist, change all permission of folders and subfolders to allow execution mode (chmod -R 777) You can



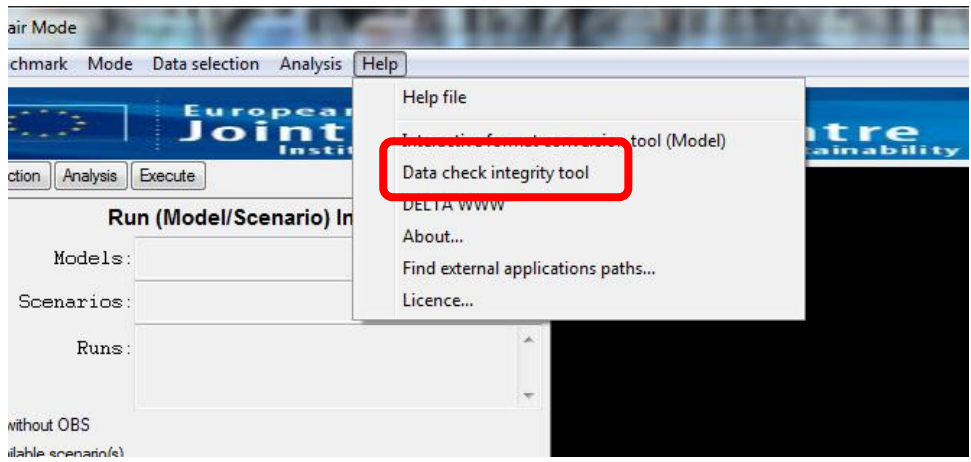
Δ tool: robustness



Method 1



Method 2



Δ tool: Robustness & I/O formats



European

DELTATool_MODcsv2cdf *** VERSION 1.1

CONV_DIR = C:\Users\Public\Documents\JRC_DELTA\delta\conversion\

HELP
GO
EXIT

ReadInfo >>

Select file type: Model

STARTUP_FILE	C:\Users\Public\Documents\JRC_DELTA\delta\resource\startup_fred.ini
INIT_RUN	20150101
END_RUN	20151231
INPUT_DIR	C:\Users\Public\Documents\JRC_DELTA\delta\data\modeling\fred\csv
INPUT_PREFIX	
INPUT_FILE_TEMPLATE	C:\Users\Public\Documents\JRC_DELTA\delta\data\modeling\fred\csv\%STATION%
OUTPUT_DIR	C:\Users\Public\Documents\JRC_DELTA\delta\data\modeling\fred
YEAR	2015
MODEL_NAME	CHIMDO
POSTFIX	TIME.cdf
FULL_OUTPUT_FILE	C:\Users\Public\Documents\JRC_DELTA\delta\data\modeling\fred\2015_CHIMDO

SaveInfo in File InfoMODcsv2cdf*.txt

Progress --

Analysis Help

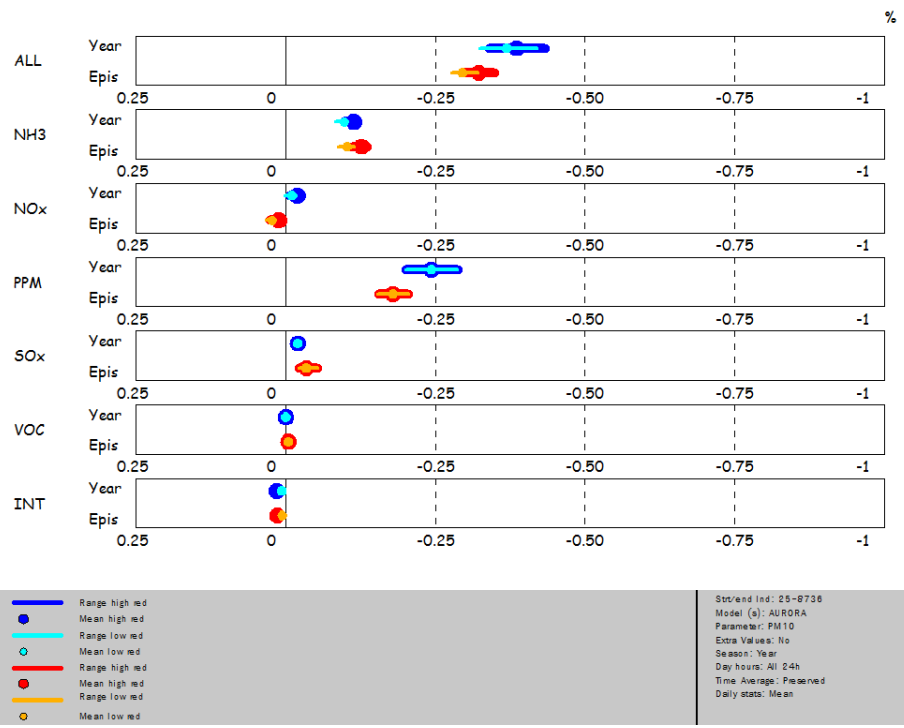
- Help file
- Interactive format conversion tool (Model)
- Data check integrity tool
- DELTA WWW
- About
- Find external applications paths...
- Licence...

Model output	Monitoring	Modeling
Hourly	CSV → CDF	CSV → CDF
Yearly	CSV (1 file)	CSV (1 file)

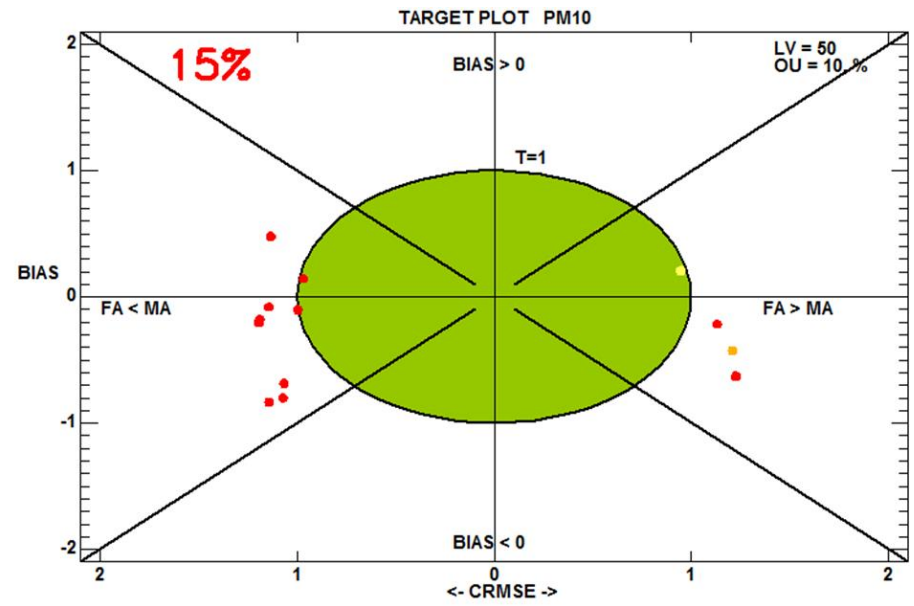
Δ tool: New applications



Planning



Forecast

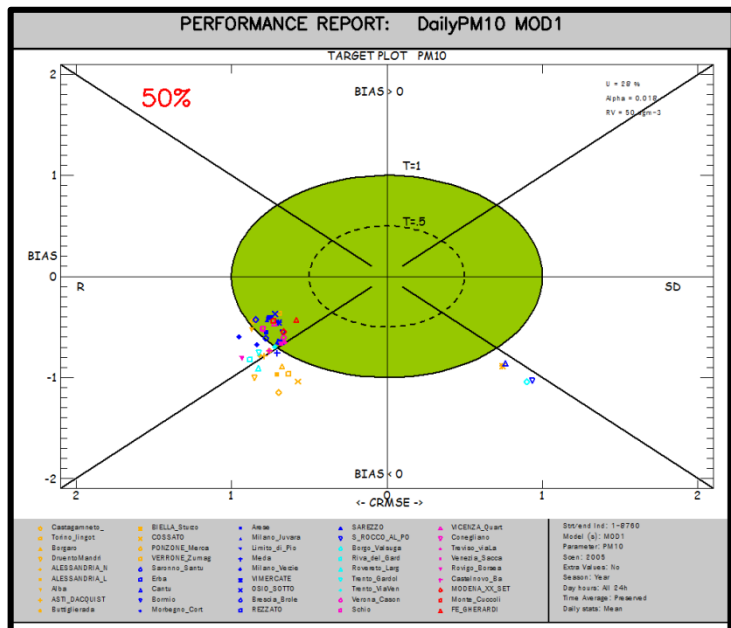


Notes are available from WG leaders (A. Clappier and F. Meleux)

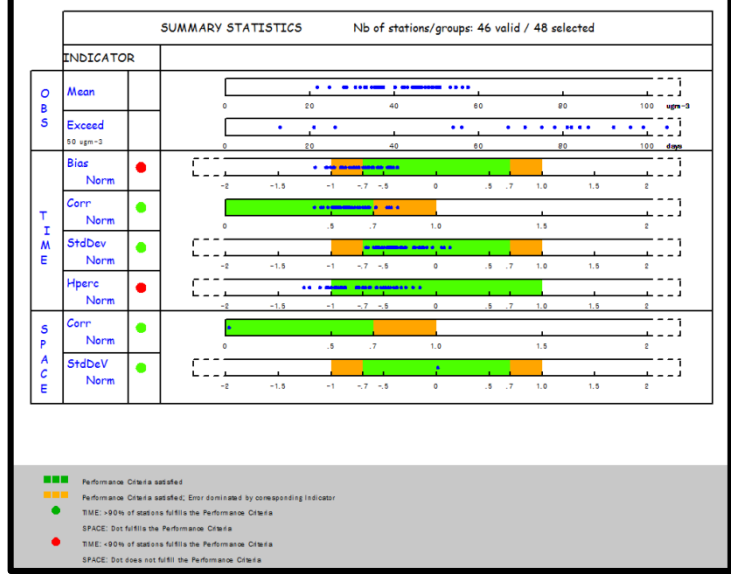
Δ tool: Performance report



European Commission



- Improved design
- Jpeg format



Thanks for advertising



European Commission



Delta Island, Bermuda






European
Commission

CLINICALLY PROVEN AUDIO TECHNOLOGY

DELTA SLEEP SYSTEM

Fall Asleep
Stay Asleep
Wake Up Rejuvenated

 **Dr. Jeffrey Thompson**
One Compact Disc

Links for additional information



fairmode.jrc.ec.europa.eu

aqm.jrc.ec.europa.eu/DELTA

FAQ | Privacy statement | Legal notice | Contact JRC | Search

JOINT RESEARCH CENTRE
The European Commission's in-house science service

European Commission > JRC > IES > Air and Climate Unit

FAIRMODE

Forum for air quality modelling in Europe

Home Contact

News and events [more updates...](#)

- Mailing list
- Meetings
- 12/13 FEBRUARY 2015** The "FAIRMODE PLENARY MEETING" will take place in Baveno (IT) Registration available soon

Working groups [details...](#)

- Assesment
- Emissions
- Source Apportionment
- Planning

Cross cutting activities (CCA) [read more...](#)

- About FAIRMODE
 - terms of reference
 - steering committee
 - national experts
 - roadmap
 - strategy
- Join FAIRMODE
- Interested in FAIRMODE? Subscribe to the email [distribution list](#)

DELTA Benchmarking

Fairmode Tools and Software

LOGIN REGISTER CONTACT

DELTA

The DELTA software is an IDL-based model evaluation software developed in the framework of the FAIRMODE procedure for benchmarking of Air Quality Directive (AQD) modelling applications.

You can freely download this tool by filling in the [application form](#) and by accepting the license agreement. If you already have a user name and a password, please proceed to the [download area](#)



Training needs

- ~~For which module would training be helpful?~~
- On which aspect should training focus?
 - Data preparation
 - Tool options
 - Interpretation
- Planned date: Autumn 2015