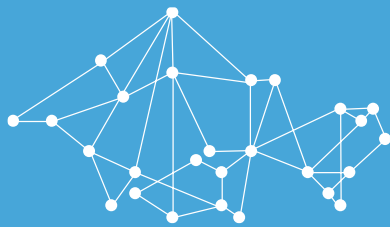




FAIRMODE

Forum for air quality modelling in Europe



WG1: FIT FOR PURPOSE RECOMMENDATIONS

STIJN JANSSEN

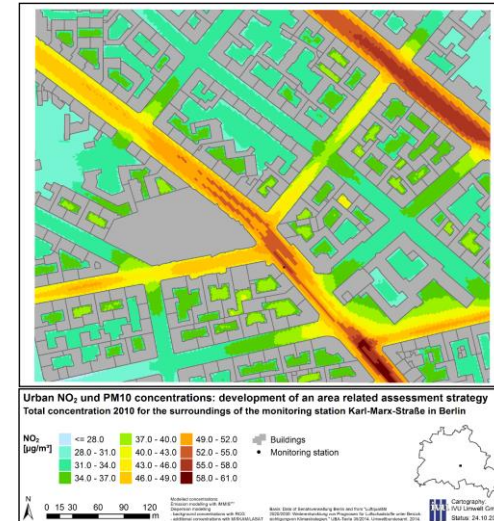
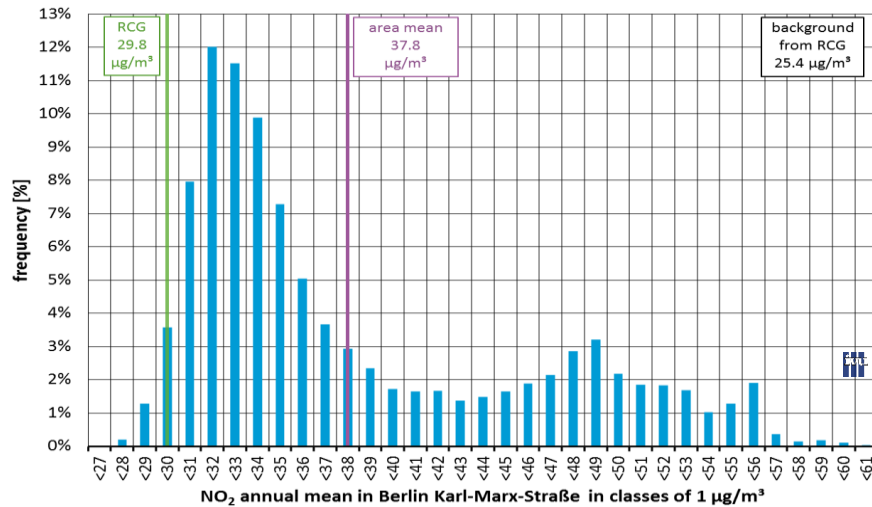
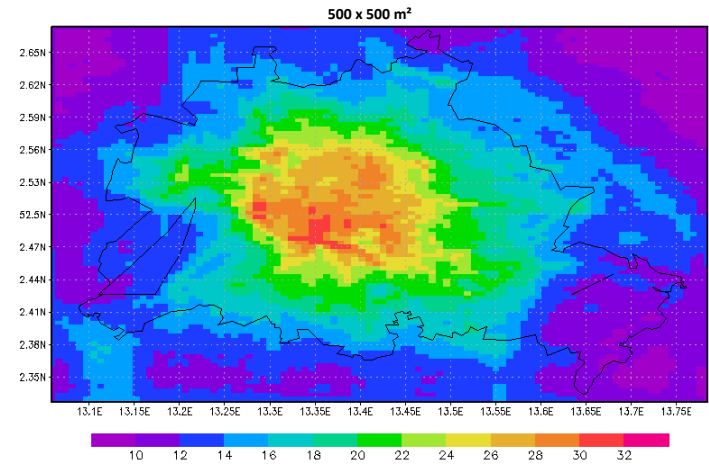
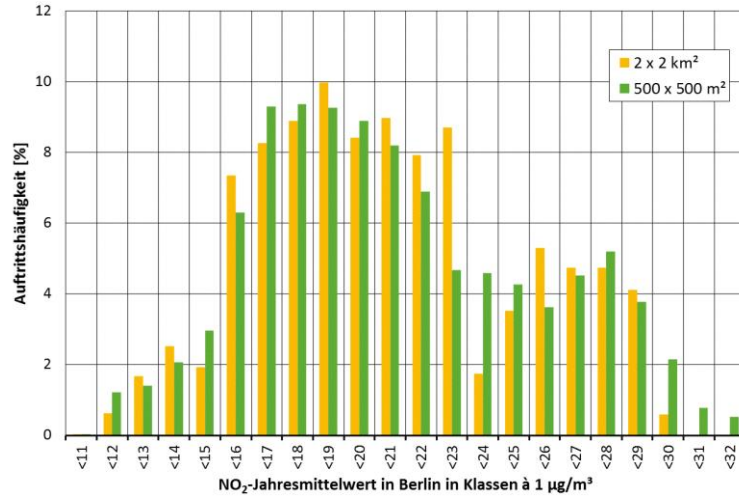
- » Reporting of an exceedance situation according to implementing decision 2011/850/EC
 - » 6. Estimate of the **surface area** where the level was above the environmental objective
 - » 7. Estimate of the **length of road** where the level was above the environmental objective
 - » 10. Estimate of the total resident **population** in the exceedance area

- » When is a model “fit” to estimate these numbers?

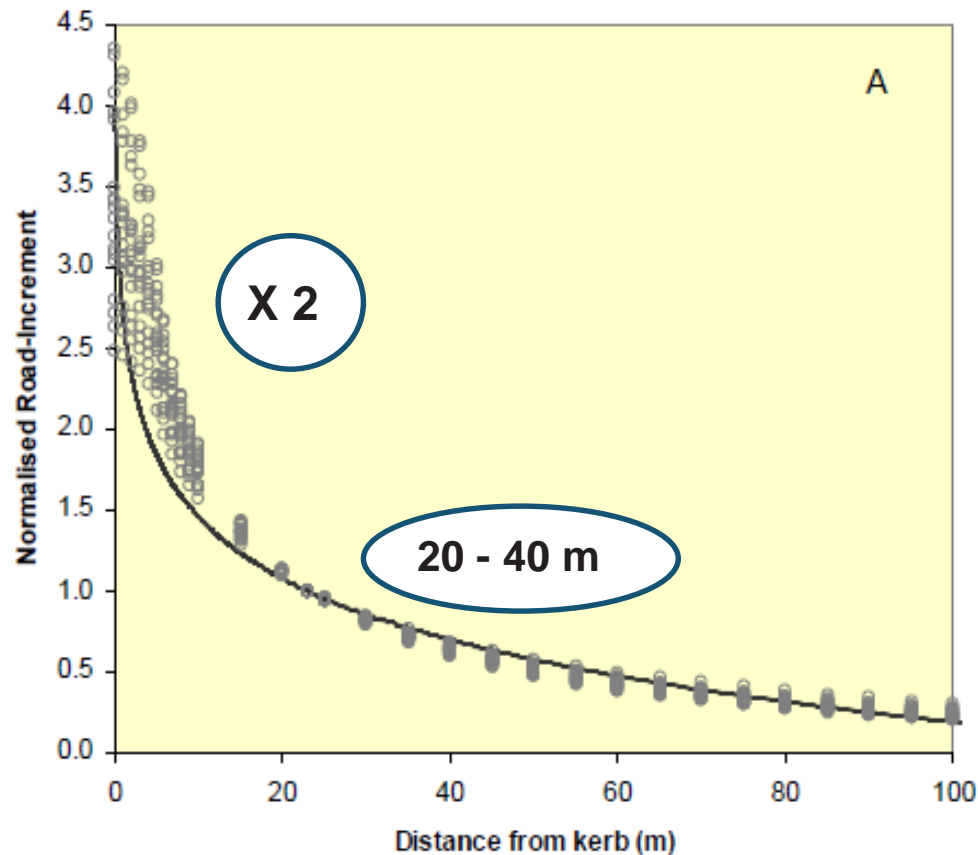
FITNESS FOR PURPOSE - ALREADY COVERED WITHIN FAIRMODE

- » Criteria to assess fitness-for-purpose:
 - » FAIRMODE's MQO
 - min. quality objective
 - » Spatial variability of the environmental objective
 - min. spatial scale
 - » Temporal scale of the environmental objective
 - min. temporal scale
- » Additional considerations:
 - » Model type
 - » Data assimilation / data fusion
 - » Output frequency

VARIABILITY IN CONCENTRATIONS AT VARIOUS SCALES



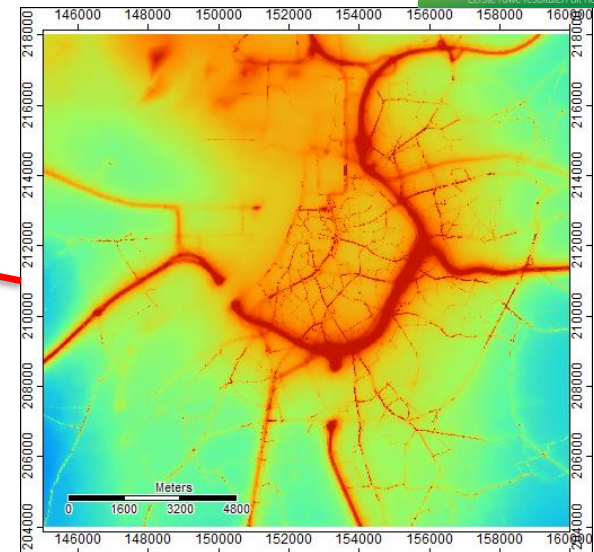
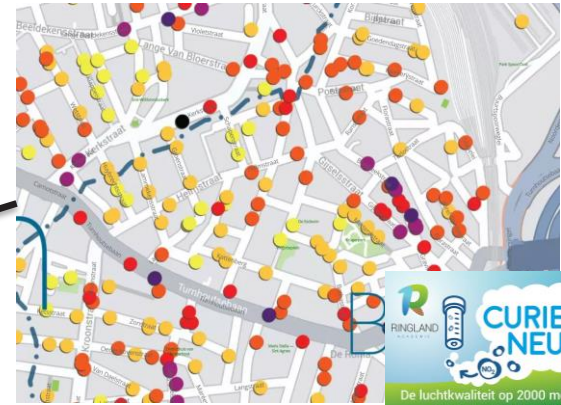
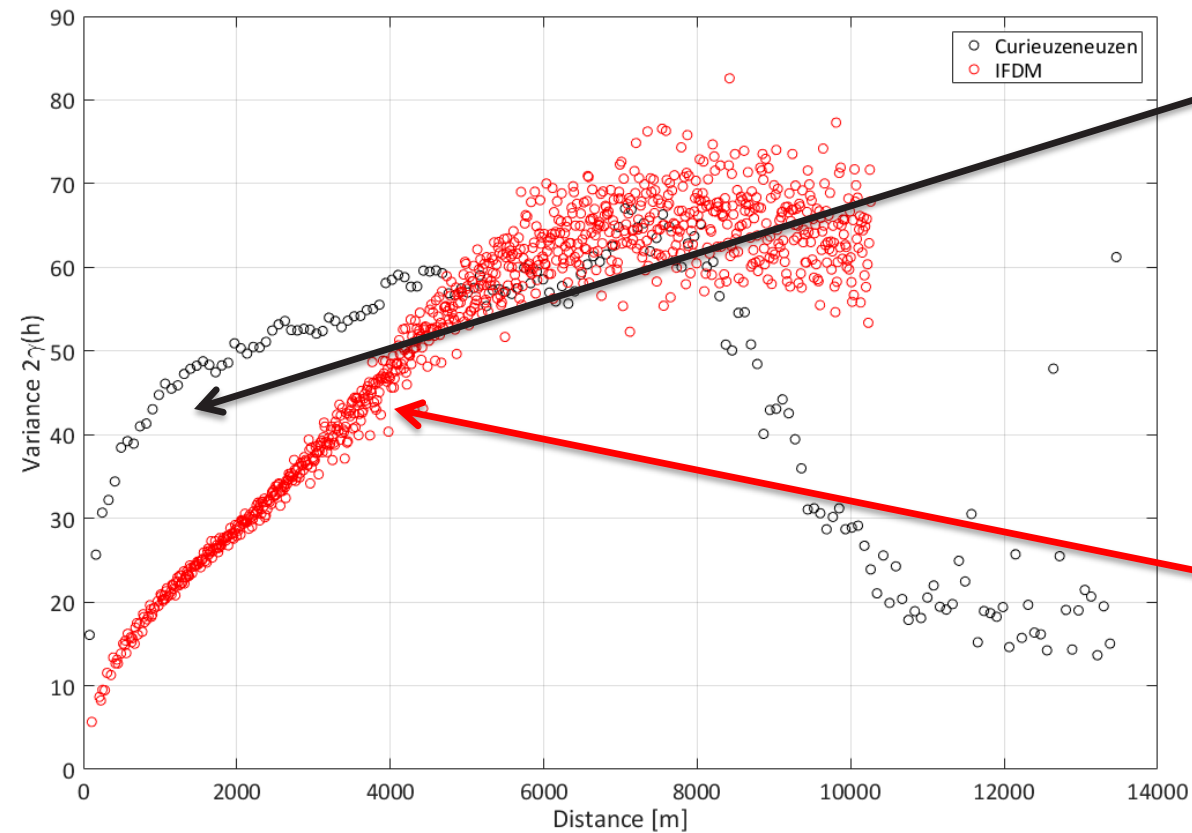
VARIABILITY IN CONCENTRATIONS FROM KERBSIDE



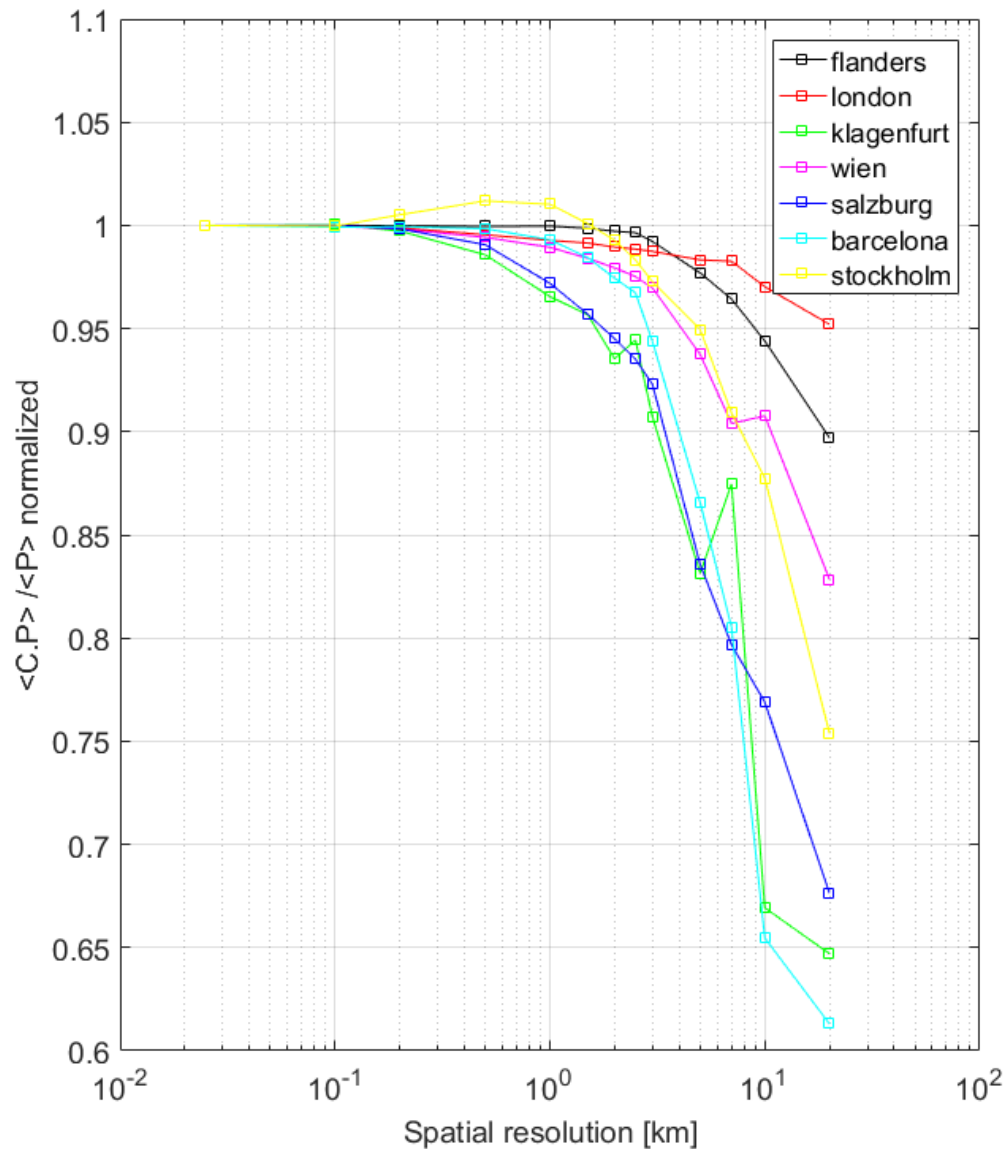
Factor of 2 difference within 10s of m - so need 10 m resolution

Source: Jenny Stocker

VARIABILITY IN CONCENTRATIONS AT URBAN SCALE



POPULATION EXPOSURE AS A FUNCTION OF SPATIAL RESOLUTION



RECOMMENDATIONS ON SPATIAL SCALE

What is an appropriate spatial scale for exceedance modelling?

- » What is the purpose?
- » **Compliance checking**
 - » Real world shows variations at the “few meter” resolution → **10m resolution** is (probably) required
- » **Static health impact assessment** studies
 - » Concentration overlay with static population density maps → **100m** seems sufficient and canyons are not required
 - » Why do we assess at street level? Why do we have traffic stations?
 - » Why do we have to assess e.g. length of roads above the limit value?
- » However, future health impact assessment studies based on **dynamic exposure**
 - » Street canyon concentrations become important → 10m resolution?
 - » Guidance from the health community required!