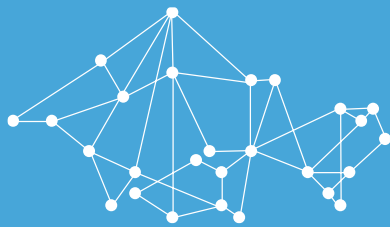




**FAIRMODE**

Forum for air quality modelling in Europe



# COMPOSITE MAPPING - INTRODUCTION

STIJN JANSSEN, PETER VIAENE, LUCA SPANO, MARK  
GUEVARA, KEES CUVELIER & PHILIPPE THUNIS

## COMPOSITE MAPPING

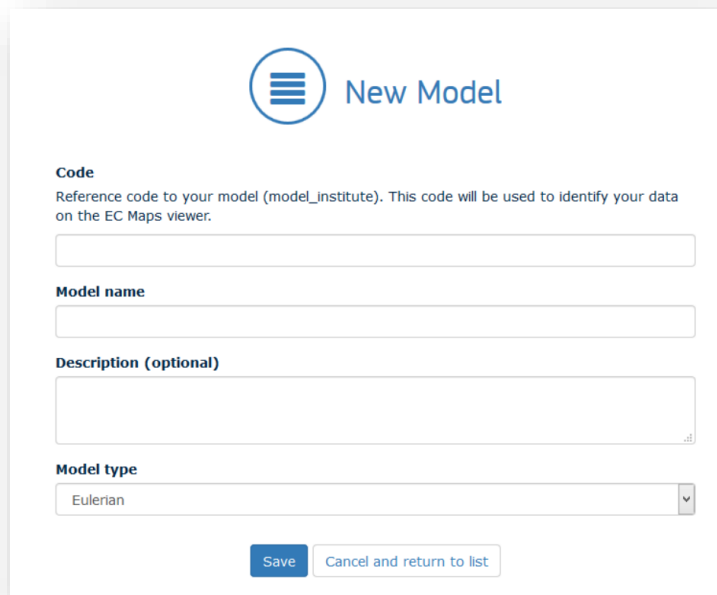
- » Composite Concentration Map launched in February 2016
- » Triggered interesting discussion in the modelling community
- » Lessons learnt since then:
  - » **Quality control** was/is a major bottleneck in data processing → QA/QC tool required
  - » **Data base** structure @ JRC could be optimized
  - » **New updated maps** became available → need for CompMap VS2
  - » Extension towards **emissions**



# NEW DATA BASE STRUCTURE @ JRC

## Reorganization of the data base and upload procedure

- » 3-level structure: Model → Run → File(s)



**New Model**

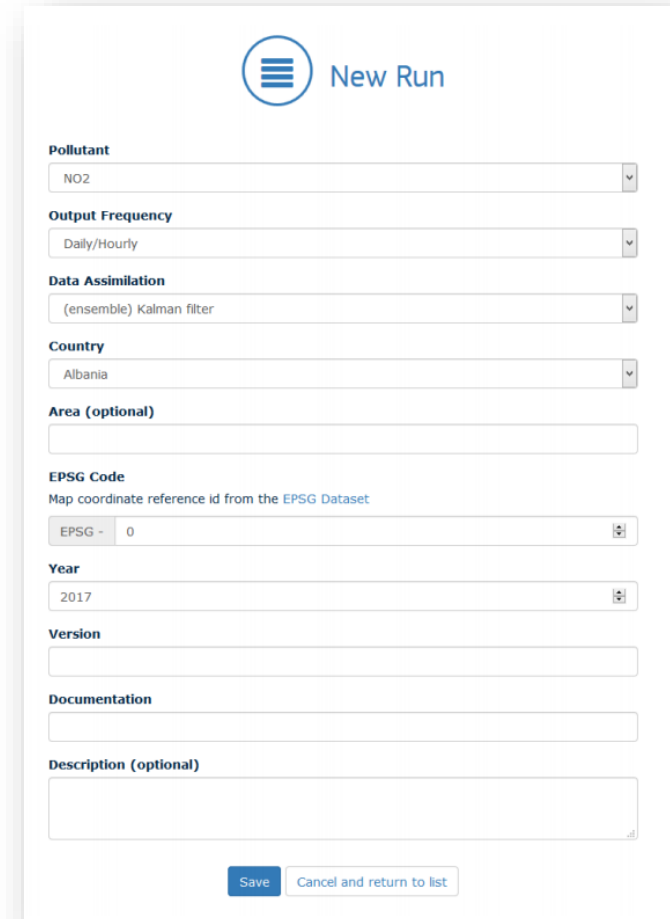
**Code**  
Reference code to your model (model\_institute). This code will be used to identify your data on the EC Maps viewer.

**Model name**

**Description (optional)**

**Model type**

Eulerian



**New Run**

**Pollutant**

NO2

**Output Frequency**

Daily/Hourly

**Data Assimilation**

(ensemble) Kalman filter

**Country**

Albania

**Area (optional)**

**EPSG Code**  
Map coordinate reference id from the [EPSG Dataset](#)

EPSG - 0

**Year**

2017

**Version**

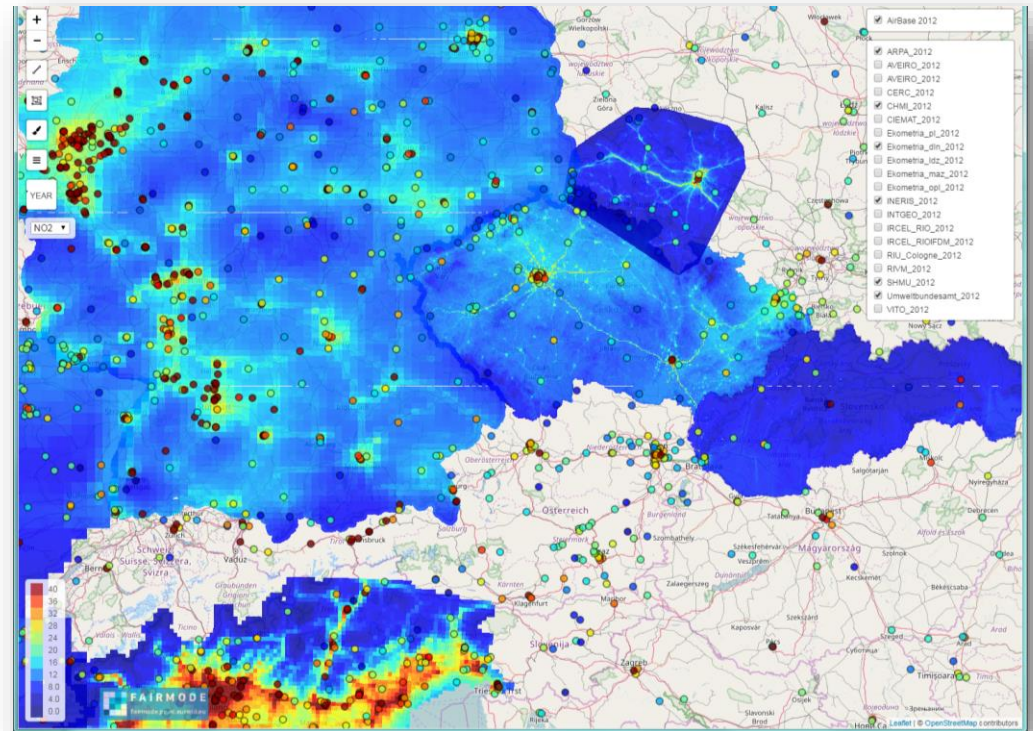
**Documentation**

**Description (optional)**

# UPDATED VISUALIZATION PLATFORM

*Composite mapping platform for concentrations & emissions*

- » Updated platform with new maps
- » Year selection → filter on year  
→ see presentation Peter Viaene
- » Similar visualization platform for emissions  
→ see presentation Marc Guevara



# THE PROCESS



Notice: separate flows for emissions and concentrations!